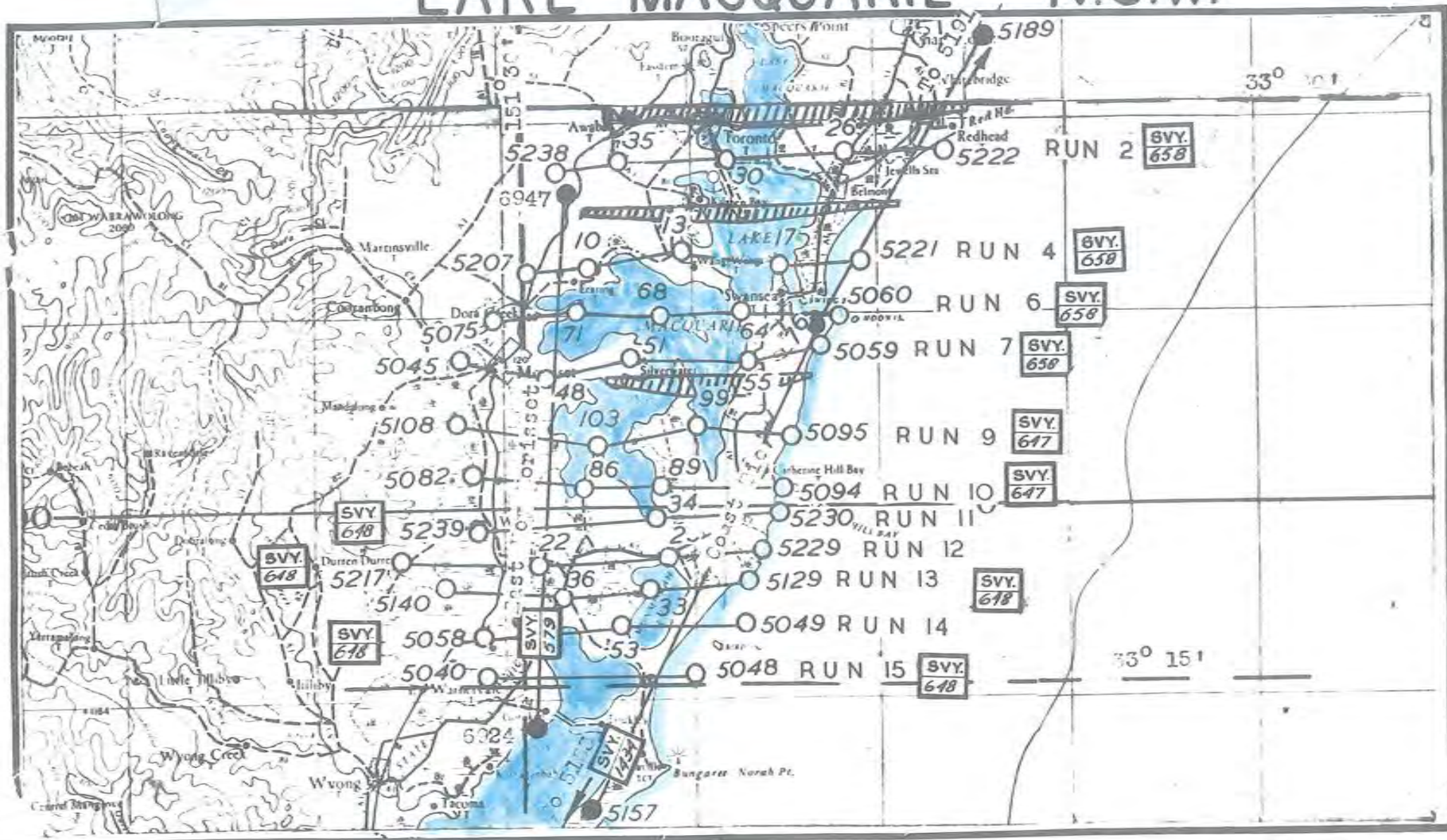


LAKE MACQUARIE N.S.W.

SHEET NO.

156/5
404

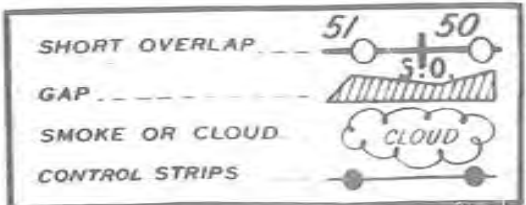
AREA COVERED BY ONE PHOTOGRAPH



NEG NO	DATE	CAMERA	HEIGHT	F/L
SVY 647	01/2/50	F 17	7500'	155.0
SVY 648	24/2/50	"	"	154.7
SVY 650	3/3/50	"	"	152.3
SVY 579	2/11/47	"	"	154.0
SVY 1484	27/2/50	"	"	153.3

NEG NO	DATE	CAMERA	HEIGHT	F/L

Scale: Miles





3015 87 SQN-298// LAKE MACQUARIE RUN 3 (03-20) 20/OCT/52 153 0⁰⁰ 7,500 RESTRICTED.

An aerial photograph showing a complex network of water channels and wetlands. A prominent, winding channel runs from the top center towards the bottom left, then turns right and continues towards the bottom right. The surrounding areas are filled with smaller, interconnected channels and irregularly shaped wetland patches. The overall appearance is that of a highly dissected landscape, possibly a floodplain or a delta system. The image is in black and white, with high contrast between the dark water and the lighter, textured wetland areas.

5017 87 SAN-298// LAKE MACQUARIE RUN 3 (03-20) 20/OCT/52 153 0^{ms} 7,500 RESTRICTED.



5019 8750N-298// LAKE MACQUARIE RUN 3 (03-20) 20/OCT/52 153.0^{mm} 7,506 RESTRICTED.



5238875QN-289// LAKE MACQUARIE RUN 2 (222-38) 3/ MAR/50 152.35^{ms} 7,500' REST.

An aerial photograph showing a winding road or path that curves through a landscape. To the right of the road, a river or stream flows. The terrain appears to be a mix of open fields and wooded areas. The image is in black and white and has a grainy texture.

5236 875GN-289// LAKE MACQUARIE RUN 2 (222-33) 3/ MAR/50 152.33^{mm} 7,500' REST.

5234 87 SQN-289// LAKE MACQUARIE RUN 2 (222-33) 3/ MAR/50 152.33^{ms} 7,500' REST.

An aerial photograph showing a landscape with a prominent grid pattern, likely a field or agricultural area. A large, bright white area is visible on the right side, possibly a snow-covered field or a large body of water. The overall image is in black and white.

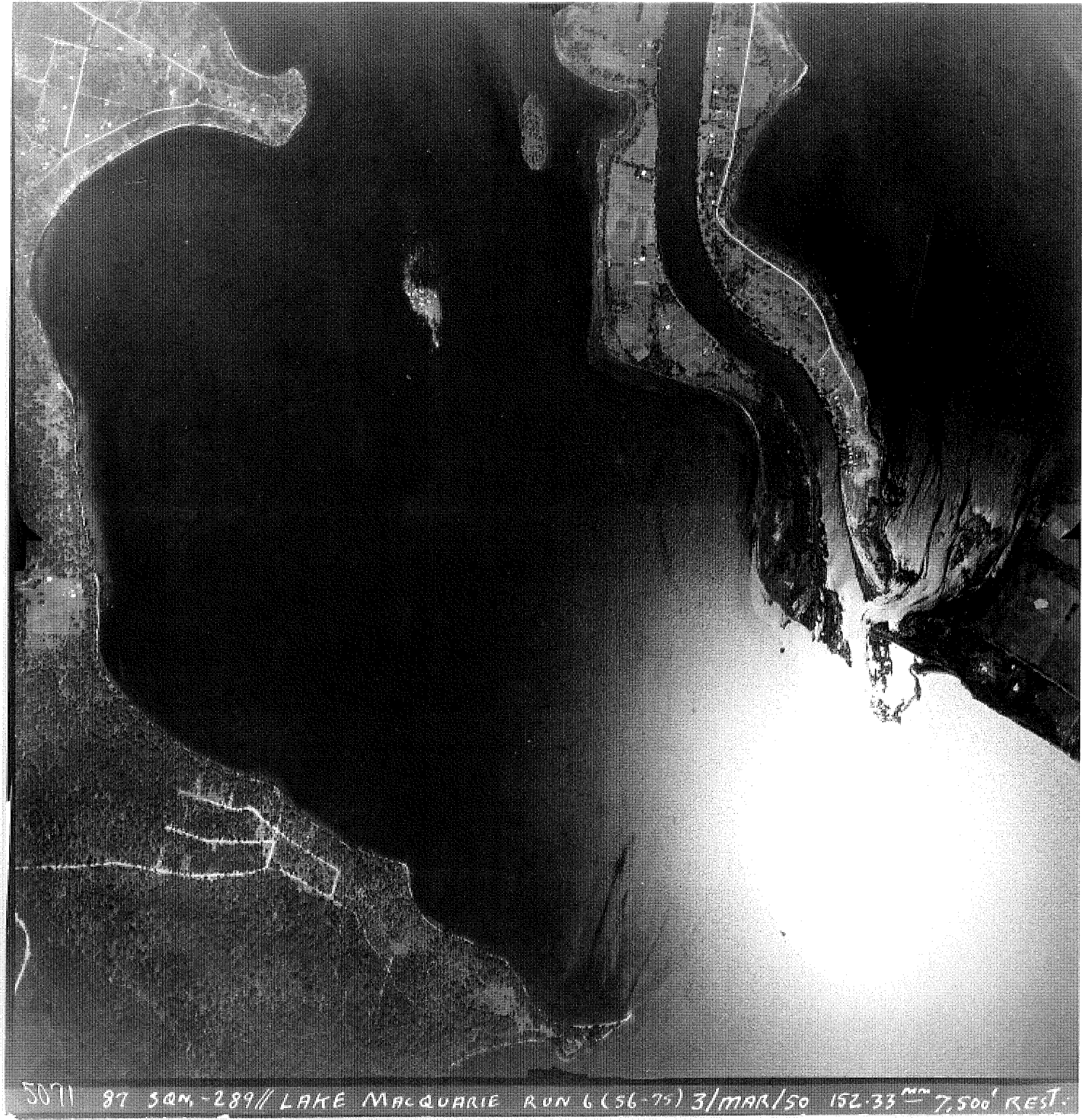
5231 875QN-289//LAKE MACQUARIE RUN 2(222-33) 3/ MAR/50 15233^{mm} 7,500' REST.



5075 97 SQM.-289// LAKE MACQUARIE RUN 6 (56-75) 3/MAR/50 152.33^{mm} 7,500' REST.



5073 87 SQM.-289// LAKE MACQUARIE RUN 6 (56-75) 3/MAR/50 152.33^{mm} 7,500' REST.



5071 87 SQM.-289// LAKE MACQUARIE RUN 6 (56-75) 3/MAR/50 152.33^m 7,500' REST.



5069 97 SAM-289// LAKE MACQUARIE RUN 6 (56-75) 3/MAR/50 152.33^{mm} 7,500' REST.



5213

87 SON.-289// LAKE MACQUARIE RUN 4(207-21) 3/MAR/50 152.33 - 7,500' REST.



5247 SON-289// LAKE MACQUARIE RUN 4 (207-21) 3/MAR/50 152.33 ²² 7,506 REST.



52087 SON.-289// LAKE MACQUARIE RUN 4 (207-21) 3/MAR/50 152.33^m 7,506' REST.

An aerial photograph showing a landscape with a winding river or stream in the upper right. The terrain is divided into various fields and patches of vegetation. The image has a grainy, high-contrast appearance. At the bottom, there is a line of handwritten text.

5207 50N-289// LAKE MACQUARIE RUN 4 (207-21) 3/MAR/50 15233 ^{ms} 7,500' REST.



5013 87 SAN-298// LAKE MACQUARIE RUN 3 (03-20) 20/OCT/52 153.0^{ms} 7,500 RESTRICTED.

USW
1440
5134



GOSFORD-
LAKE
MACQUARIE

RUN 3
14/8/66

15,500' ASL
114.44 mm

CROWN
COPY N.S.
LANDS PHO
LOG-E

NSW
1442
5130



GOSFORD -
LAKE
MACQUARIE

RUN 3
14/8/66

15,500' ASL
114.44 mm

CROWN
COPY N.S.
LANDS PHOTO
LOG-E

N.S.W.
1442
5118



GOSFORD -
LAKE
MACQUARIE

RUN 2
14/8/66

15,500' ASL
114.44 mm

CROWN
COPY N.S.
LANDS PHOT
LOG-E

NSW
1442
5120



GOSFORD
LAKE
MACQUARIE

RUN 2
14/8/66

15,500' ASL
114.44 mm

CROWN
COPY N.S.
LANDS PHOTO
LOG-E

NSW
1442
5132

GOSFORD
LAKE
MACQUARIE

RUN 3
14/8/66

15,500' ASI
114.44 mm

CROWN
COPY N
LANDS PH
TOG-E





1140 1025 151 14

NSN
2315
06

Lake Macquarie

Run 2
27.5.75

6401M. ASL.
151.45mm

ORIGIN
COPY NO. 11
LAKES PHOTO
LOG-E



MA 1025 151741

NOV 23/15 04

LAKE MACQUARIE

Time 27.5.75

6401M. ASL.
151.45mm

ORIGIN
EDGE N.W.
LAND PHOTO
LOG-5



UAC 1025 11745

11745

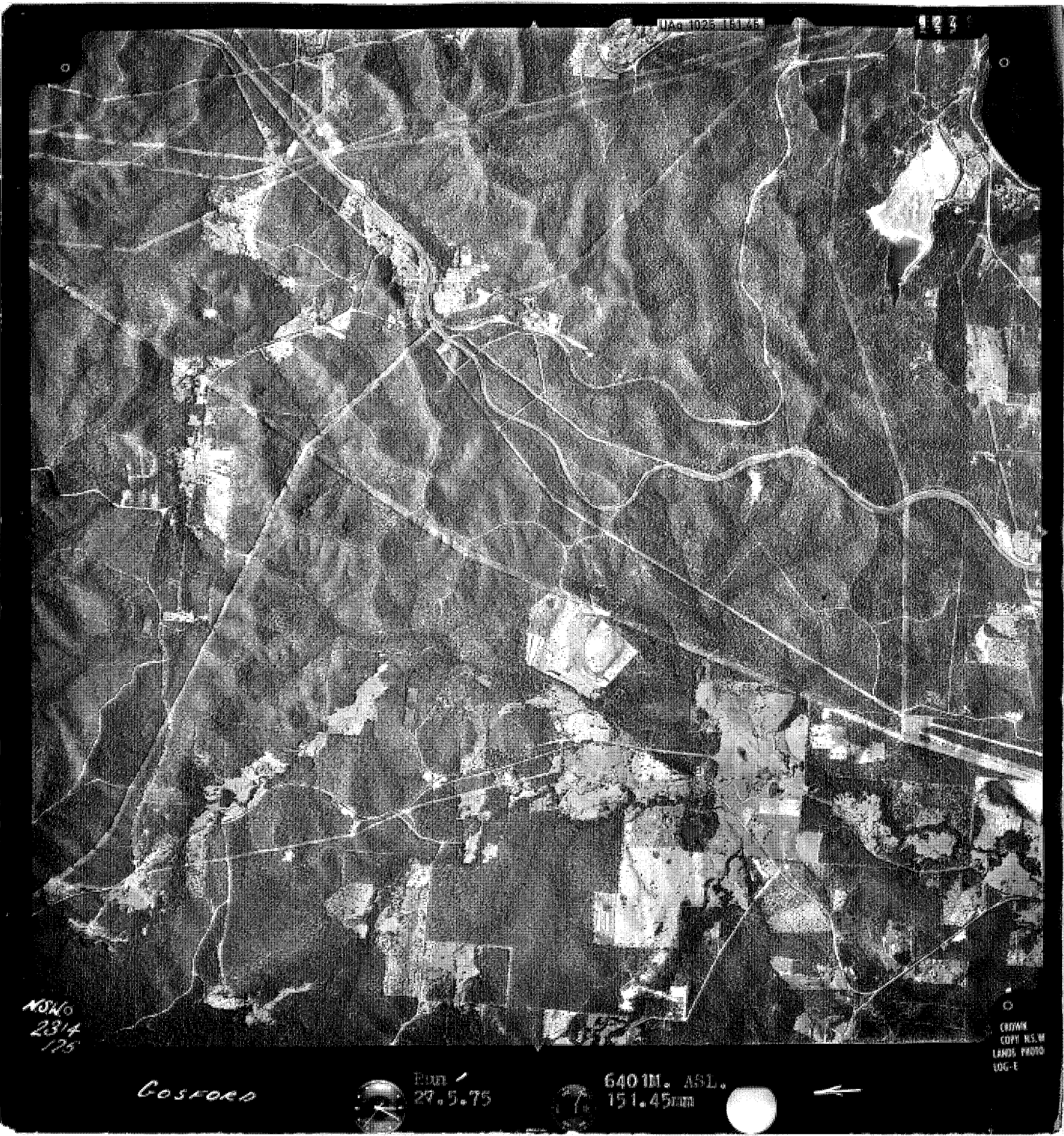
NSW
2314
175

GOSFORD

Exp
29.5.75

640 M. ASL.
151.45mm

CITIZEN
COPY RES. W
LANDS PHOTO
LOG-E





MAX 1021544

115

NSN
2314
177

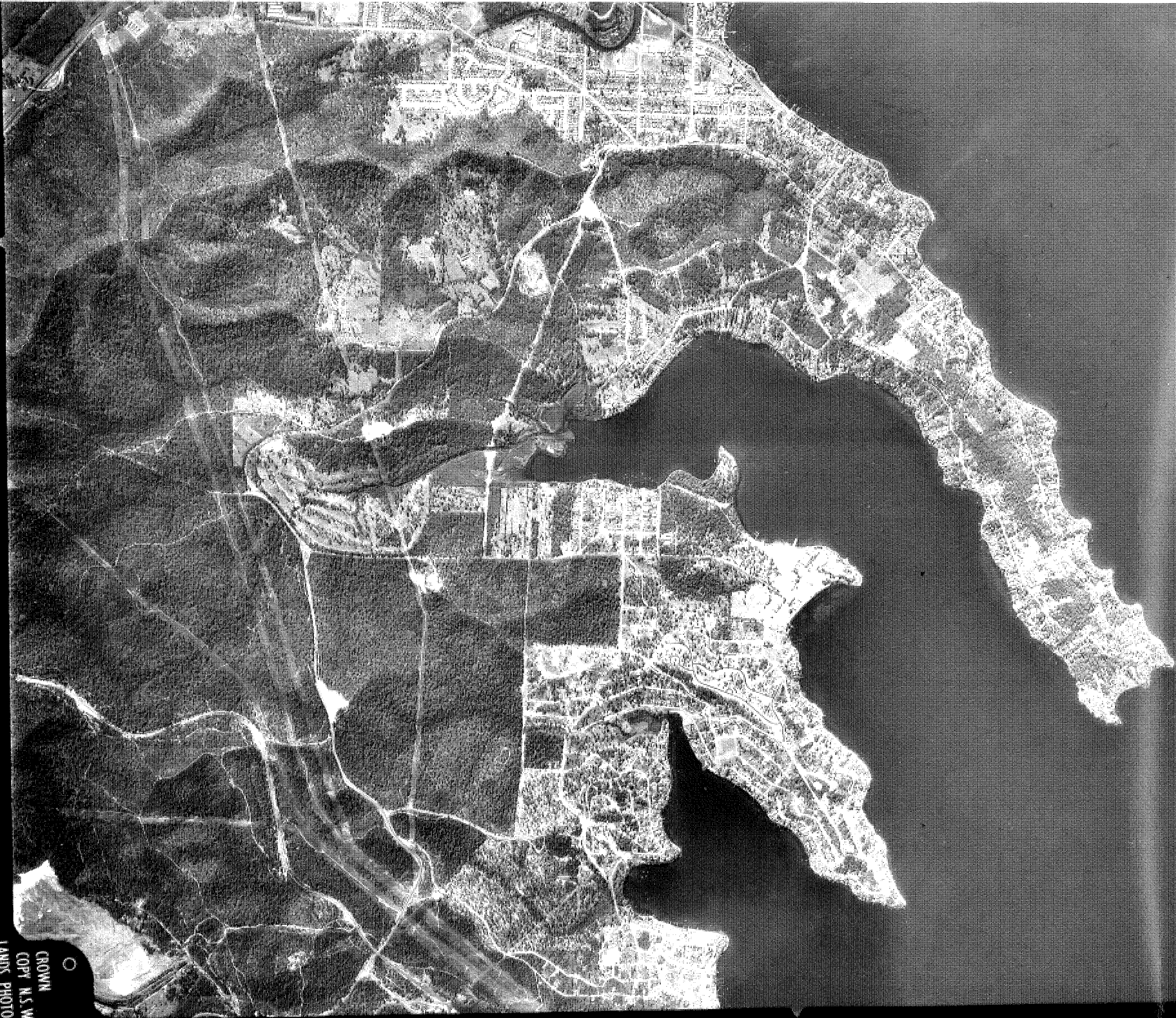
Lake Macquarie

27.5.75

640 IM. ASL.
151.45m

○
CROWN
COPY N.S.W.
LANDS PHOTO
LOC. E

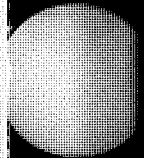




Run
27.5.75

640 M. ASL.
151.45mm

○
CROWN
COPY N.S.W
LANDS PHOTO
LOG-E



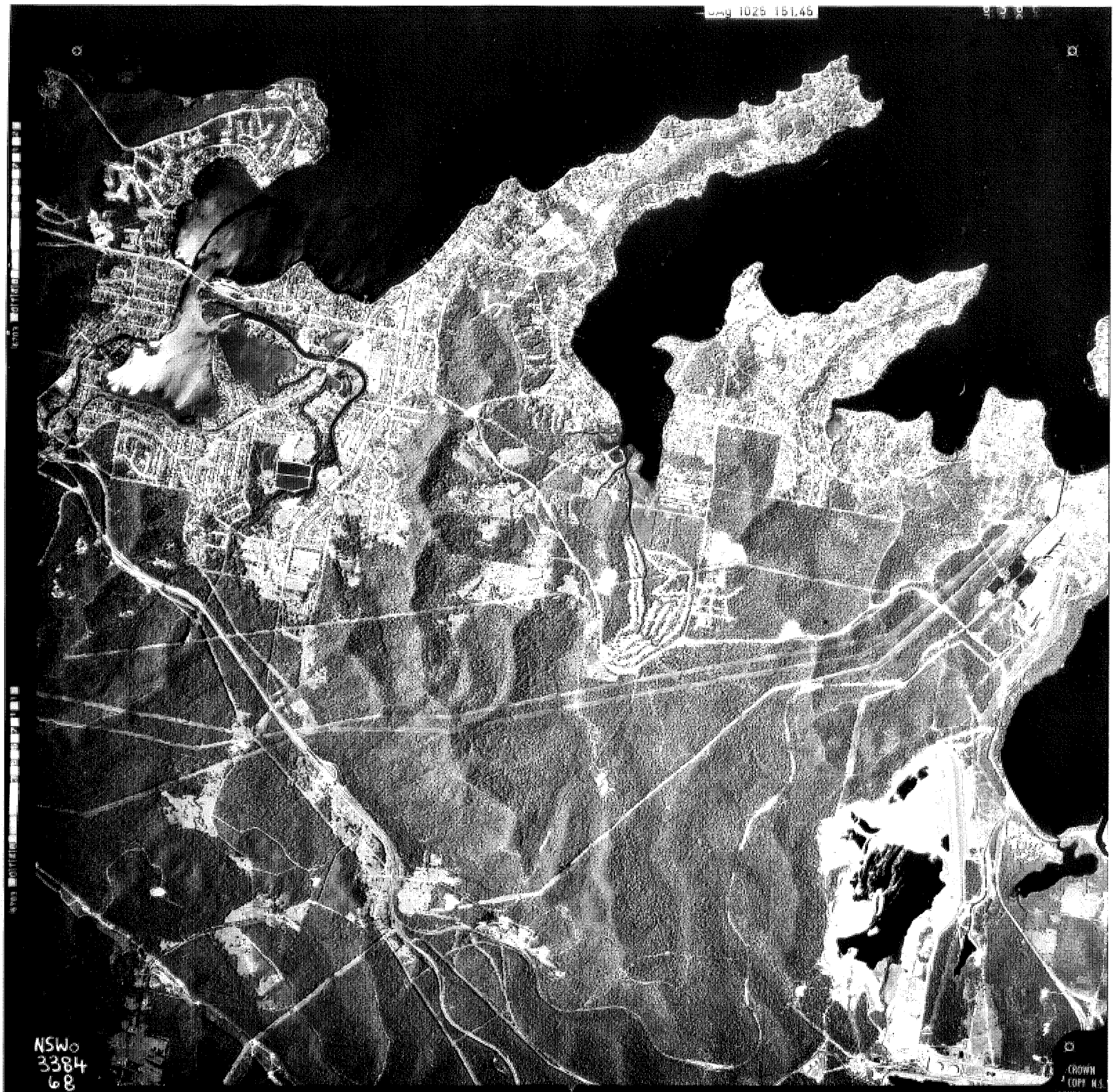




UA9 1025 15145



UAG 1025 15145



Vertical text on the left edge of the photograph, likely a scale or identification mark.

NSW
3384
68

LAKE MACQUARIE
1:40 000
NSW 3384

RUN 1
27.4.84

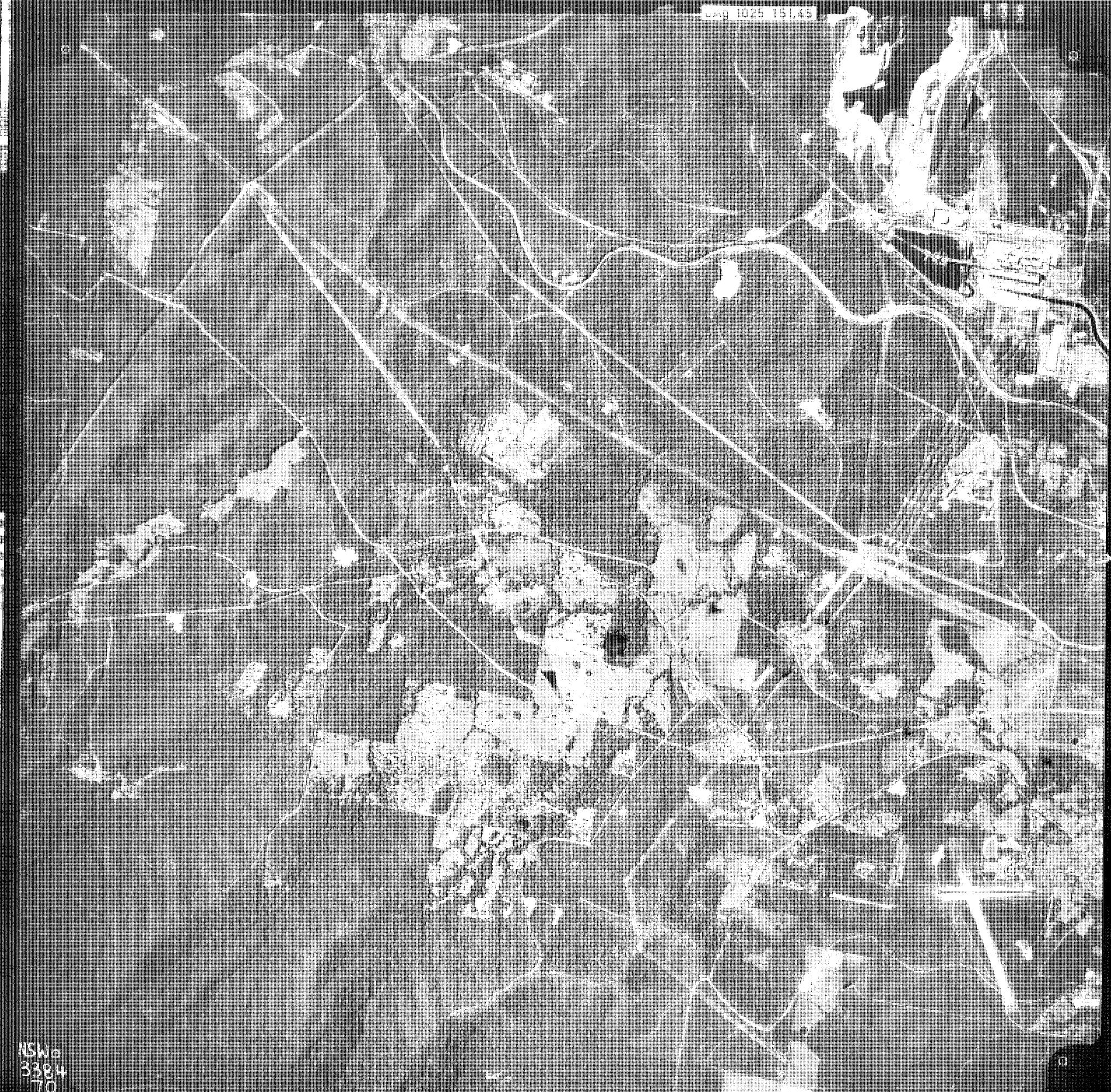
6431 M ASL
151.45MM

CROWN
COPY N.S.
LANDS PHOTO



0000 1025 151.45

638

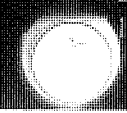


NSW
3384
70

LAKE MACQUARIE
1:40 000
NSW 3384



RUN 1
27.4.84



6431 M ASL
151.45MM



1025 151.45

NSW
3384
56

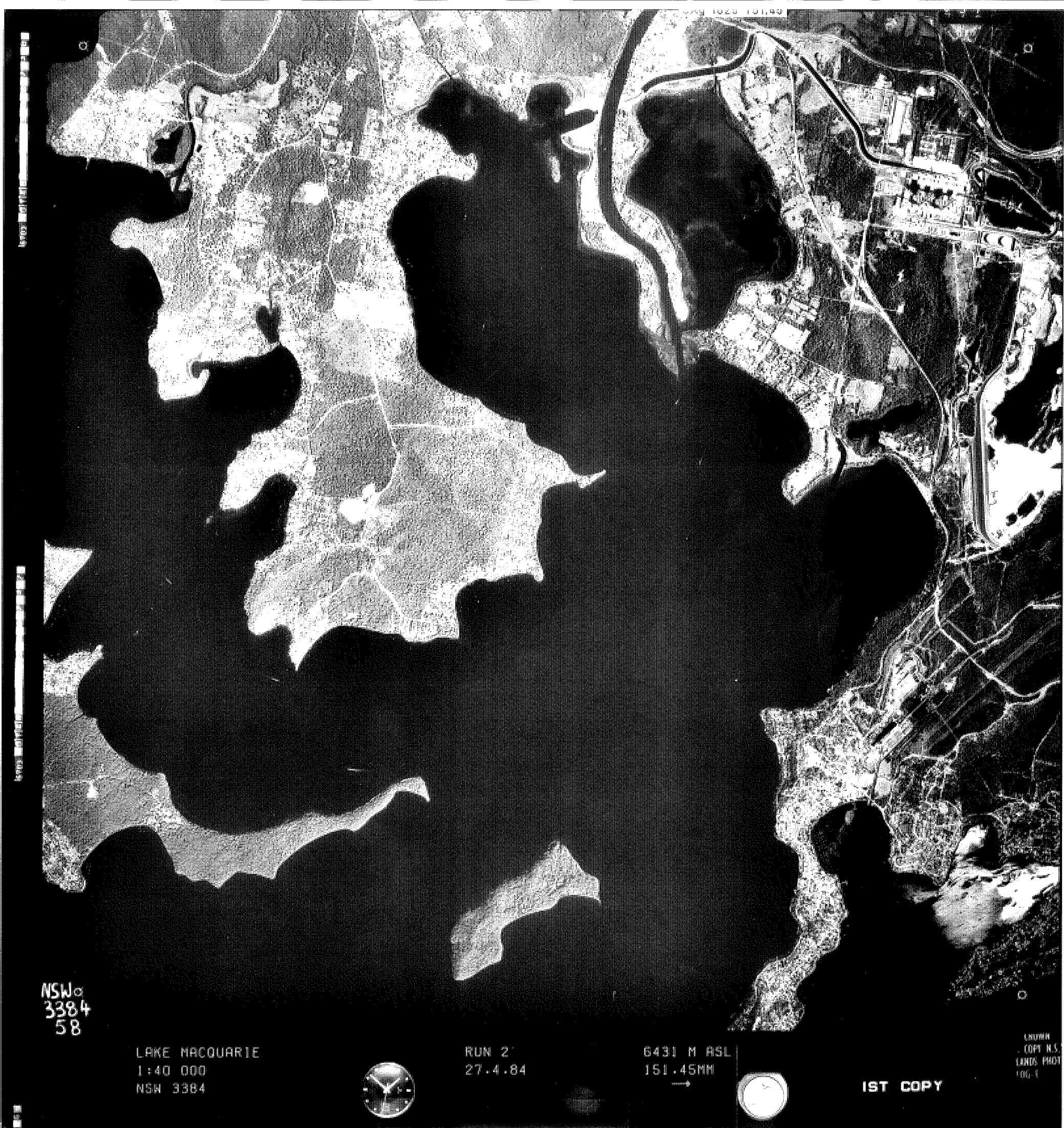
LAKE MACQUARIE
1:40 000
NSW 3384

RUN 2
27.4.84

6431 M ASL
151.45MM
→



CROWN
COPY N.S.W.
LANDS PHOTO



1023 10143

NSW 3384 58

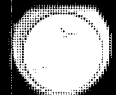
NSW
3384
58

LAKE MACQUARIE
1:40 000
NSW 3384



RUN 2
27.4.84

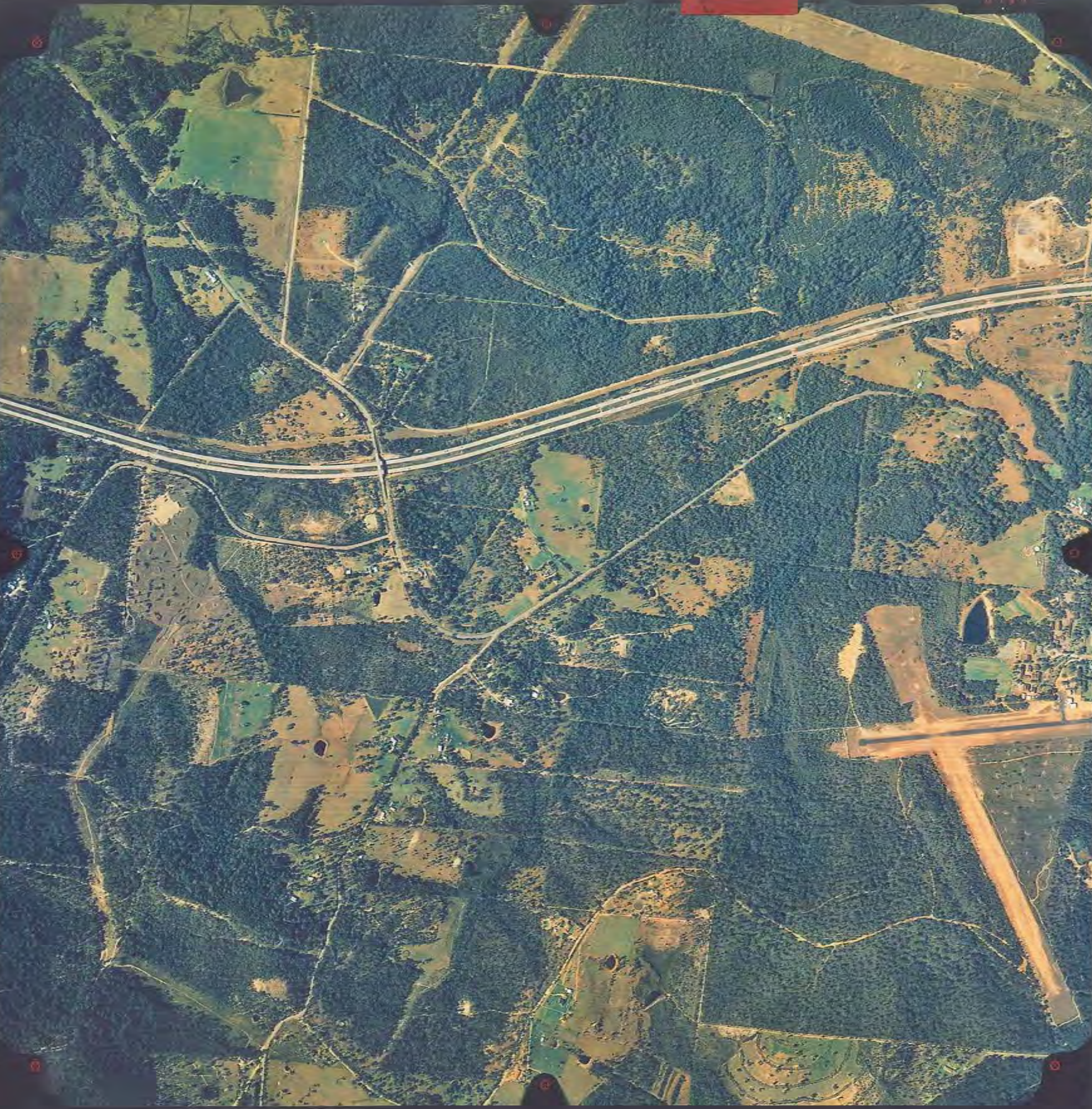
6431 M ASL
151.45MM
→



1ST COPY

UNKNOWN
COPY N.S.
LANDS PHOTO
100.1

LAKE MACQUARIE C.C. RUN 8
M2029 APPROX. PHOTO SCALE 1:16000 29-5-96 NSW4309 184



NSW4309 (M2029)
LAKE MACQUARIE CITY COUNCIL

RUN 8
152.76mm
184-209

2565m ASL.
29-5-96

© Surveyor General's Department
All Rights Reserved
← APPROX. PHOTO
SCALE 1:16000

Lake Macquarie C.C. RUN 8
M2029 APPROX 1:16000 2565m asl 152.76mm 29/05/96 NSW4309 184



NSW4309 (M2029)
LAKE MACQUARIE CITY COUNCIL

RUN 8
152.76mm
184-209

2565m ASL.
29-5-96

← © Surveyor General's Department
All Rights Reserved
APPROX. PHOTO
SCALE 1:16000



THE MACQUARIE C.C. RUN 8
ASPE² APPROX 1:16000 2565m a.s.l. 152.76mm 29/5/96 NSW4309 184

NSW4309 (M2029)
LAKE MACQUARIE CITY COUNCIL

RUN 8
152.76mm
184-209

2565m ASL.
29-5-96

© Surveyor General's Department
All Rights Reserved
← APPROX. PHOTO
SCALE 1:16000



LAKE MACQUARIE C.C. RUN 8 184209 APPROX 152.76mm 29-5-96 NSW4309

NSW4309 (M2029)
LAKE MACQUARIE CITY COUNCIL

RUN 8
152.76mm
184-209

2565m ASL.
29-5-96

© Surveyor General's Department
All Rights Reserved
← APPROX. PHOTO
SCALE 1:16000

NSW4309 (M2029)

LAKE MACQUARIE CITY COUNCIL

160-183

152.76mm

RUN 9

2565m ASL

29-5-96

SCALE 1:16000

APPROX. PHOTO

Surveyor General's Department
All Rights Reserved



FS100 1/200 +/4.0

FF2.0 EC 0 * SP- 0/H.03332 00% dtd19.2 ds025 26.2V -62mb FPM 0/25

0.175



NSW4309 (M2029)

LAKE MACQUARIE CITY COUNCIL

RUN 9
152.76mm
160.183

2565m ASL.
29.5-96

© Surveyor General's Department
All Rights Reserved
APPROX. PHOTO
SCALE 1:16000

F3100 1 / 200 F/4.0 F2.0 EC 0 SP4 VM, B0544 000 d1016.7 45025 26.30

0.173

0171



FS100 1/ 260 f/4.0 FF2.0 EC 0. SP- w/h. 03427 00% dt016.3 ds019 26.6V -62mb ER00 DAMSEA

NSW4309 (M2029)
LAKE MACQUARIE CITY COUNCIL

RUN 9
152.76mm
160-183

2565m ASL.
29-5-96

© Surveyor General's Department
All Rights Reserved

APPROX. PHOTO
SCALE 1:16000



0189

F8190 1/ 280 F/4.0 FF2.0 ED 0 SF- W/M. 03/96 00x and 10

NSW4309 (M2029)
LAKE MACQUARIE CITY COUNCIL

RUN 9
152.76mm
160-183

2565m ASL.
29-5-96

© Surveyor General's Department
All Rights Reserved
APPROX. PHOTO
SCALE 1:16000



LAKE MACQUARIE C.C. RUN 10 152.76mm 29-5-96 NSW4309 137

NSW4309 (M2029)
LAKE MACQUARIE CITY COUNCIL

RUN 10
152.76mm
137-159

2565m ASL.
29-5-96

© Surveyor General's Department
All Rights Reserved
← APPROX. PHOTO
SCALE 1:16000