

COMMERCIAL IN CONFIDENCE

Macquarie Generation – Project Symphony

Liddell Power Station

Preliminary Environmental Site Assessment

Ref: 0213879RP02_DRAFT Rev02

October 2013

COMMERCIAL IN CONFIDENCE

Liddell Power Station

Approved by:	Joseph Ferring
Position:	Project Manager
Signed:	DRAFT
Date:	18 October, 2013
Approved by:	Matthew Klein
Position:	Managing Partner – Asia Pacific Transaction Services
Signed:	DRAFT
Date:	18 October, 2013

Preliminary Environmental Site Assessment

Macquarie Generation - Project Symphony

October 2013

Environmental Resources Management Australia Pty Ltd Quality System

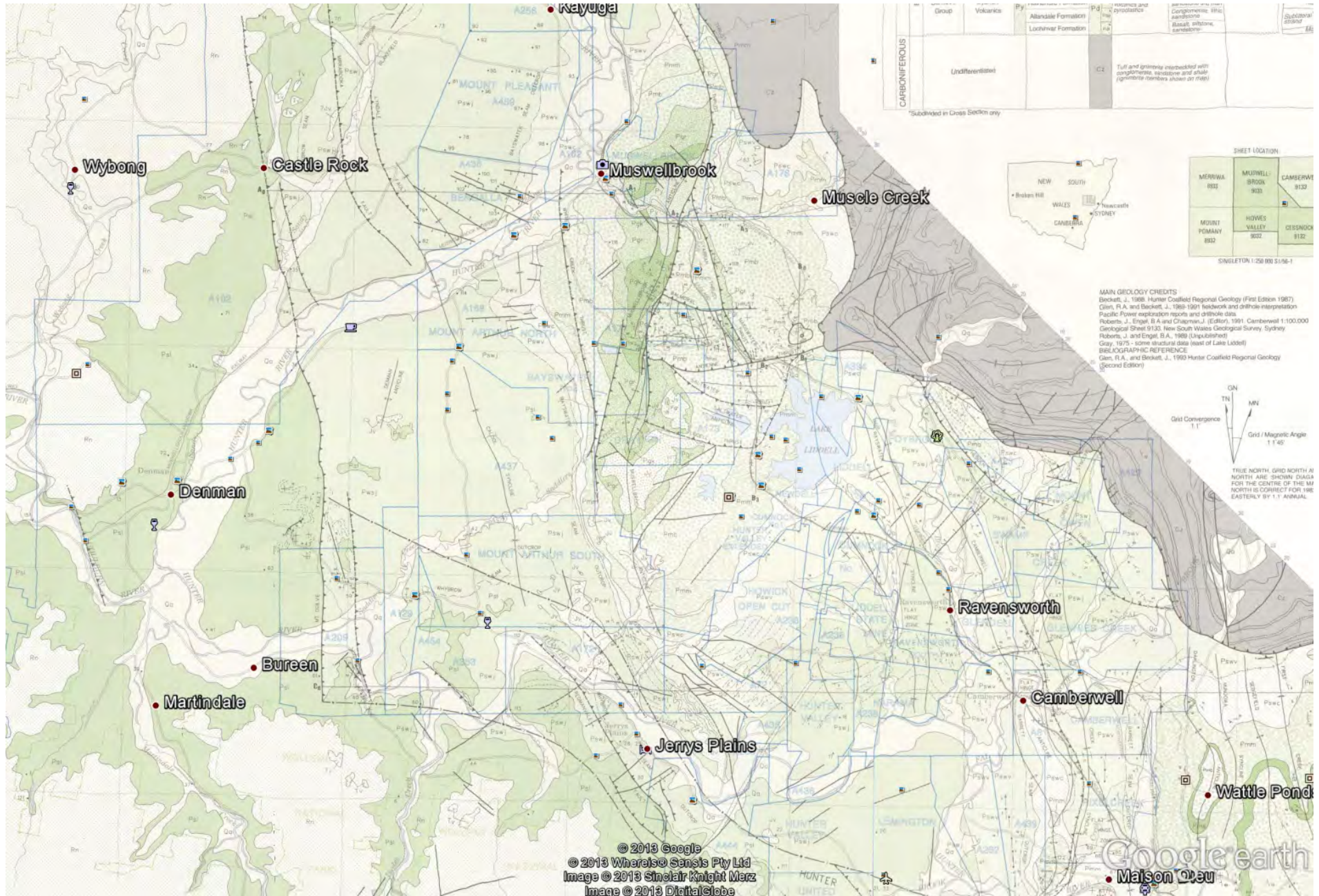
0213879RP02 DRAFT Rev02

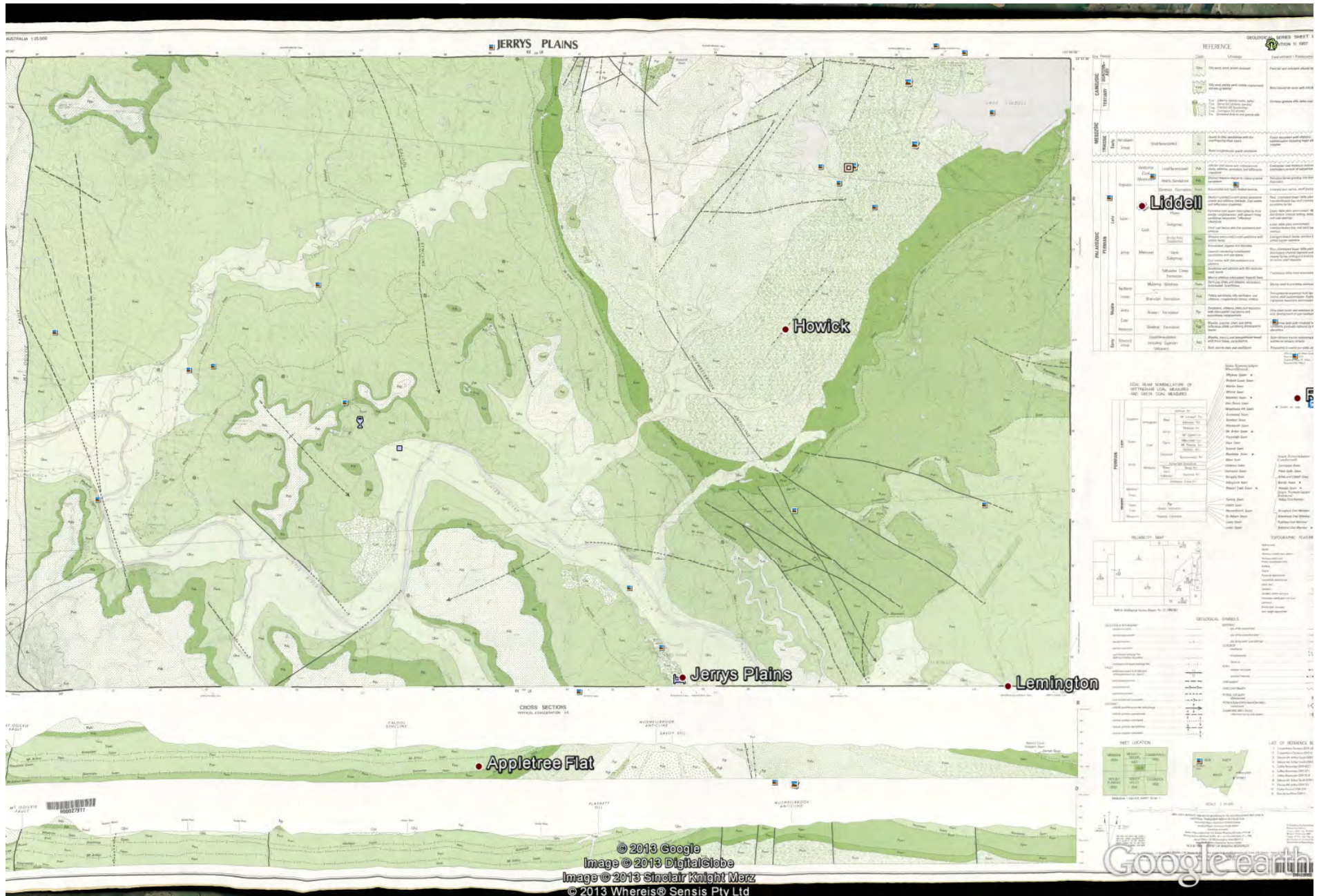
www.erm.com

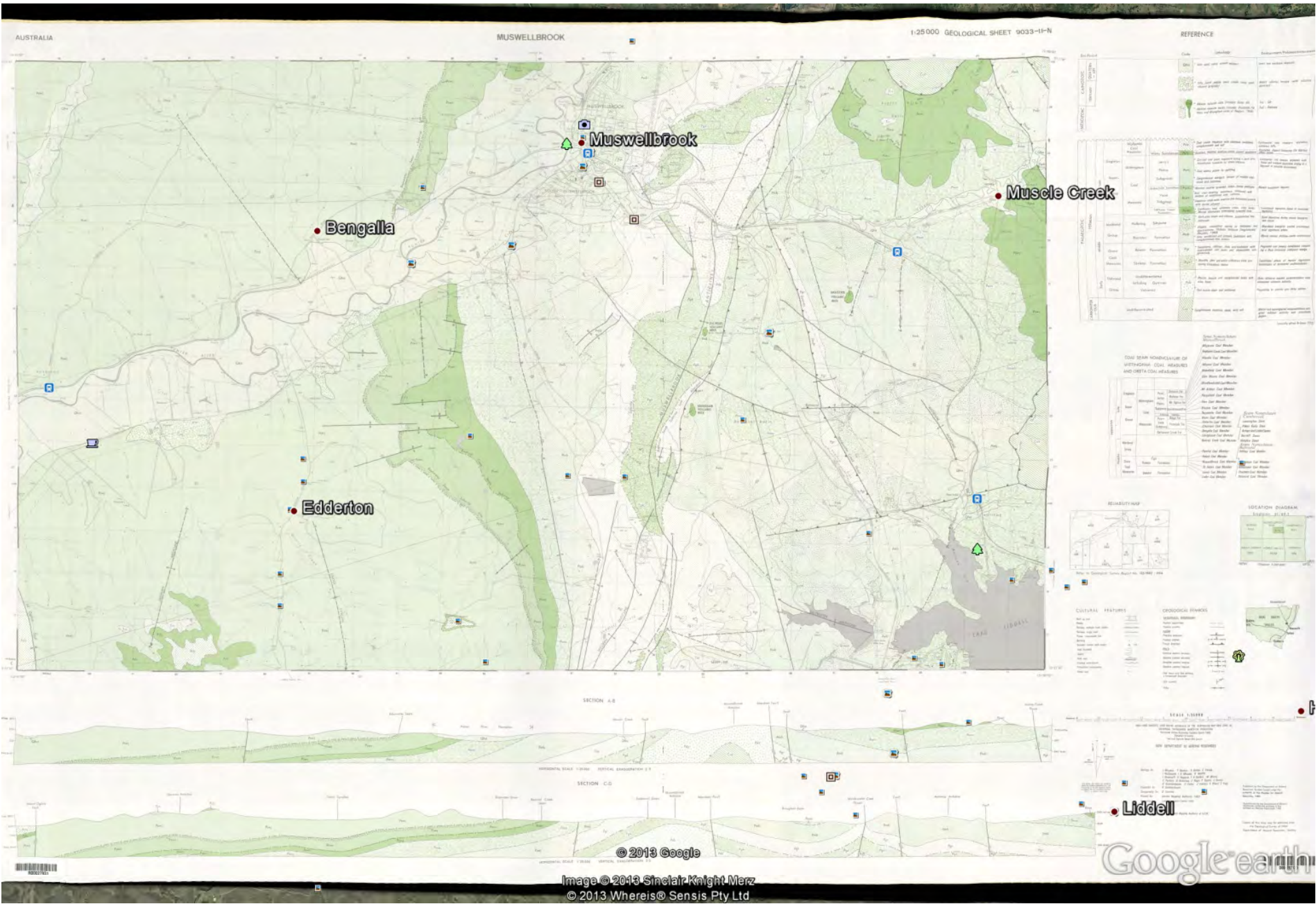
This disclaimer, together with any limitations specified in the report, apply to use of this report. This report was prepared in accordance with the contracted scope of services for the specific purpose stated and subject to the applicable cost, time and other constraints. In preparing this report, ERM relied on: (a) client/third party information which was not verified by ERM except to the extent required by the scope of services, and ERM does not accept responsibility for omissions or inaccuracies in the client/third party information; and (b) information taken at or under the particular times and conditions specified, and ERM does not accept responsibility for any subsequent changes. This report has been prepared solely for use by, and is confidential to, the client and ERM accepts no responsibility for its use by other persons. This report is subject to copyright protection and the copyright owner reserves its rights. This report does not constitute legal advice.

Annex D

Results of Background Searches







NSW
2242
106

CROWN
COPY N.S.
LANDS PHOT
LOG-E

MUSWELLBROOK
NSW 2242



RUN 1M
28.6.74



8230 M ASL
151.45 MM

IST COPY

UAg 1025 151.45



NSW
2242
102

MUSWELLBROOK
NSW 2242



RUN 1M
28.6.74



8230 M ASL
151.45 MM

1ST COPY

CROWN
COPY N.S.W.
LANDS PHOTO
LOG-E

UAg 1025 151.45

1025 151.45



NSW
2242
98

© CROWN
COPY N.S.W.
LANDS PHOTO
LOG-E

MUSWELLBROOK
NSW 2242



RUN 1M
28.6.74



8230 M ASL
151.45 MM

1ST COPY

UAg 1025 151.45



NSW
2242
94

MUSWELLBROOK
NSW 2242



RUN 2M
28.6.74

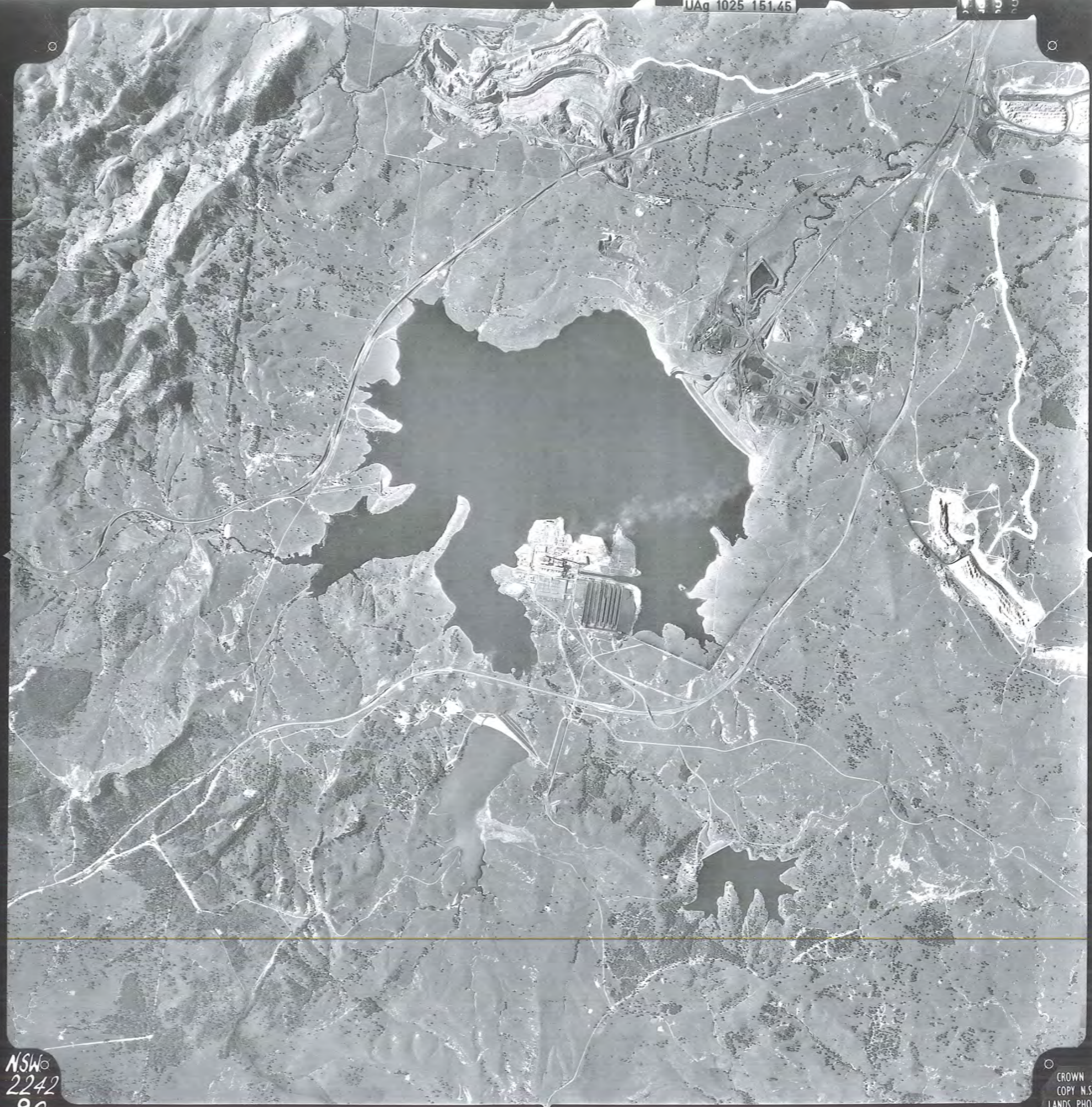


8230 M ASL
151.45 MM

1ST COPY

CROWN
COPY N.S.W.
LANDS PHOTO
LOG-E

UAg 1025 151.45



NSW
2242
90

CROWN
COPY N.S.W.
LANDS PHOTO
LOG-E

MUSWELLBROOK
NSW 2242



RUN 2M
28.674



8230 M ASL
151.45 MM

1ST COPY

UAg 1025 151.45

1 5 1

NSW
2242
86

CROWN
COPY N.S.
LANDS PHOT
LOG-E

MUSWELLBROOK
NSW 2242



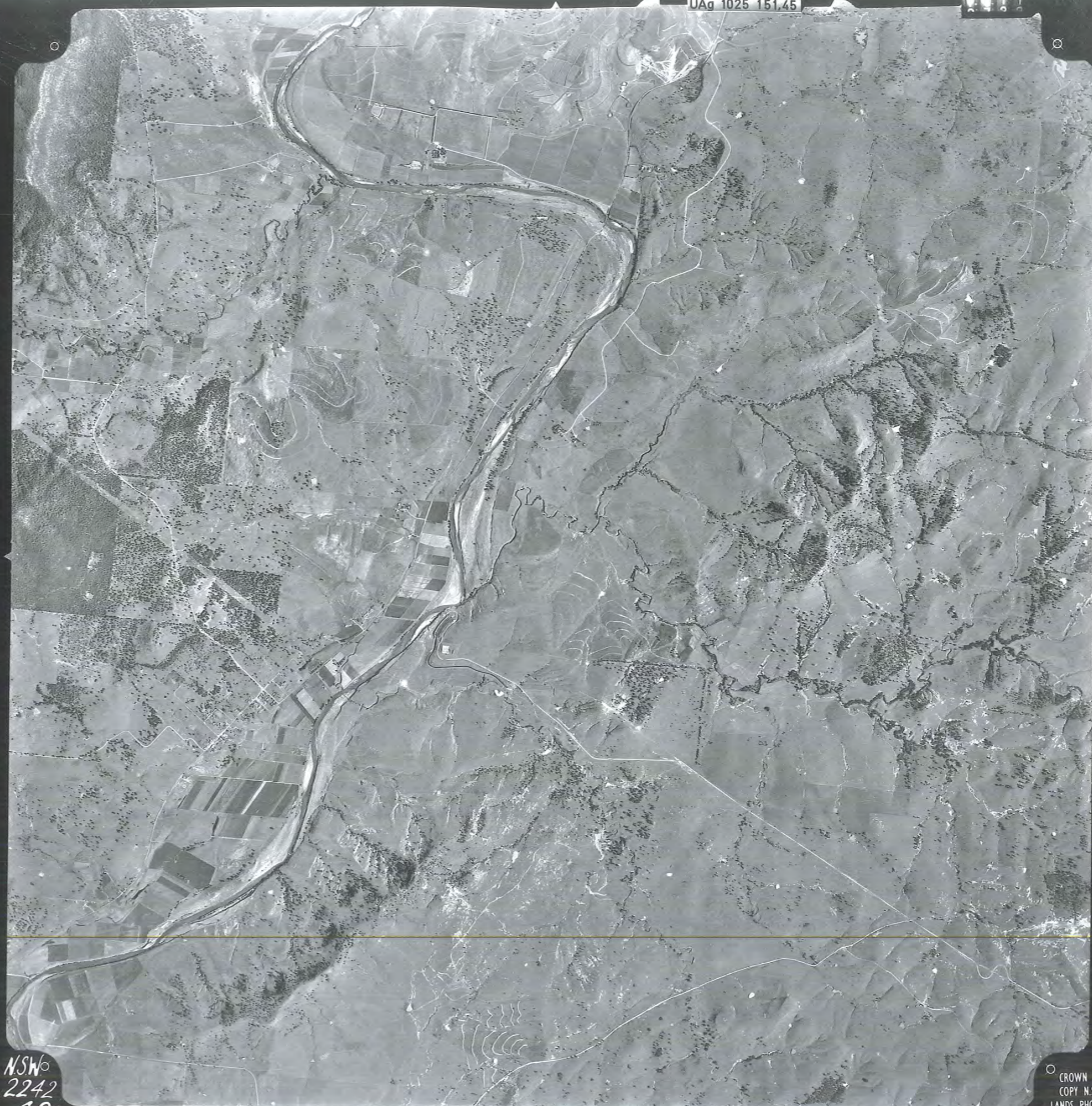
RUN 2M
28.6.74



8230 M ASL
151.45 MM

IST COPY

UAg 1025 151.45



NSW
2242
48

CROWN
COPY N.S.W.
LANDS PHOTO
LOG-E

MUSWELLBROOK
NSW 2242



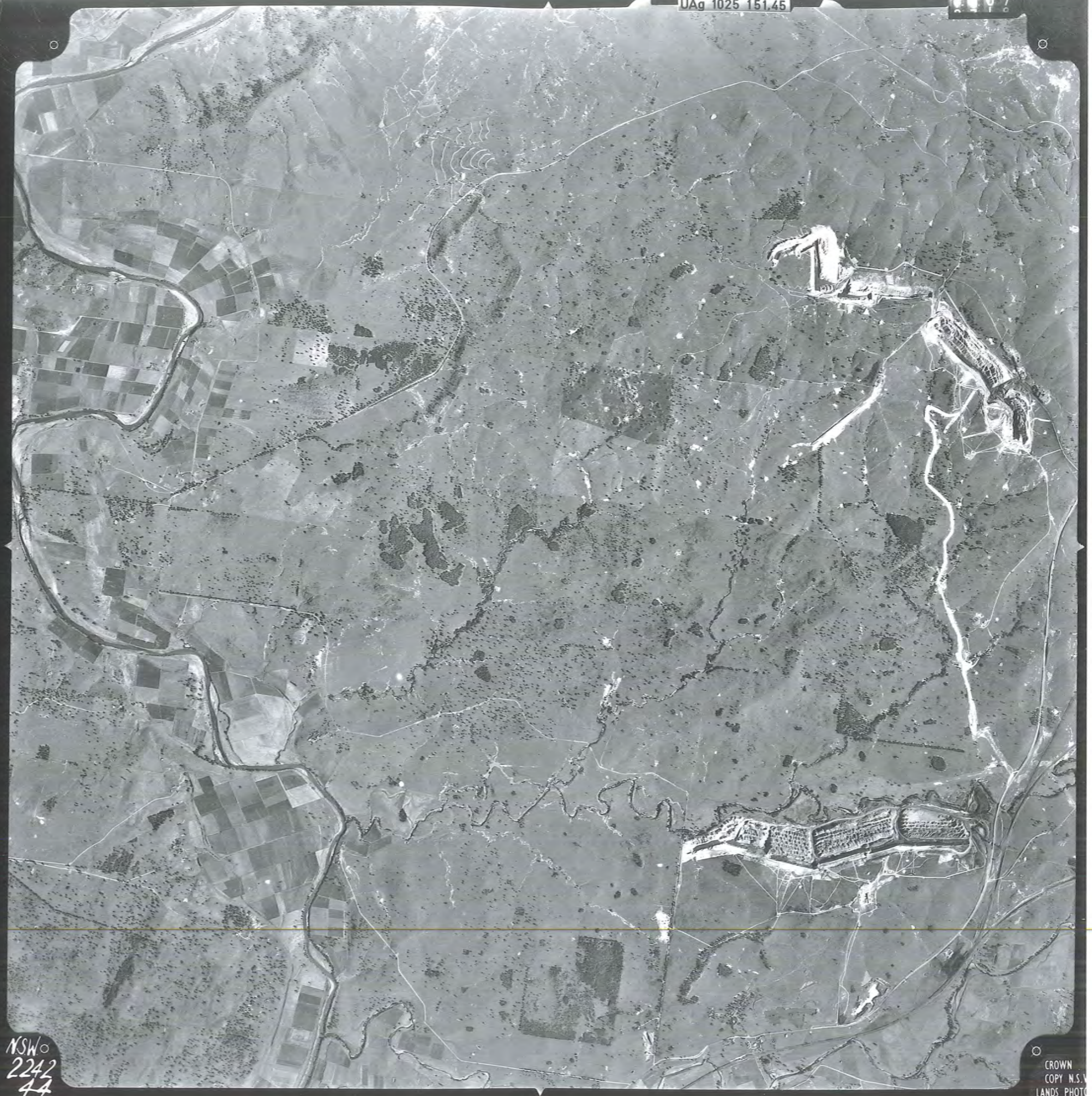
RUN 3M
28.6.74



8230 M ASL
151.45 MM

1ST COPY

UAg 1025 151.45



NSW
2242
44

CROWN
COPY N.S.W.
LANDS PHOTO
LOG-E

MUSWELLBROOK
NSW 2242



RUN 3M
28.6.74



8230 M ASL
151.45 MM



1ST COPY

UAg 1025 151.45

0003



NSW
2242
40

CROWN
COPY N.S.W.
LANDS PHOTO
LOG-E

MUSWELLBROOK
NSW 2242



RUN 3M
28.6.74



8230 M ASL
151.45 MM

1ST COPY

NSW
3248
72

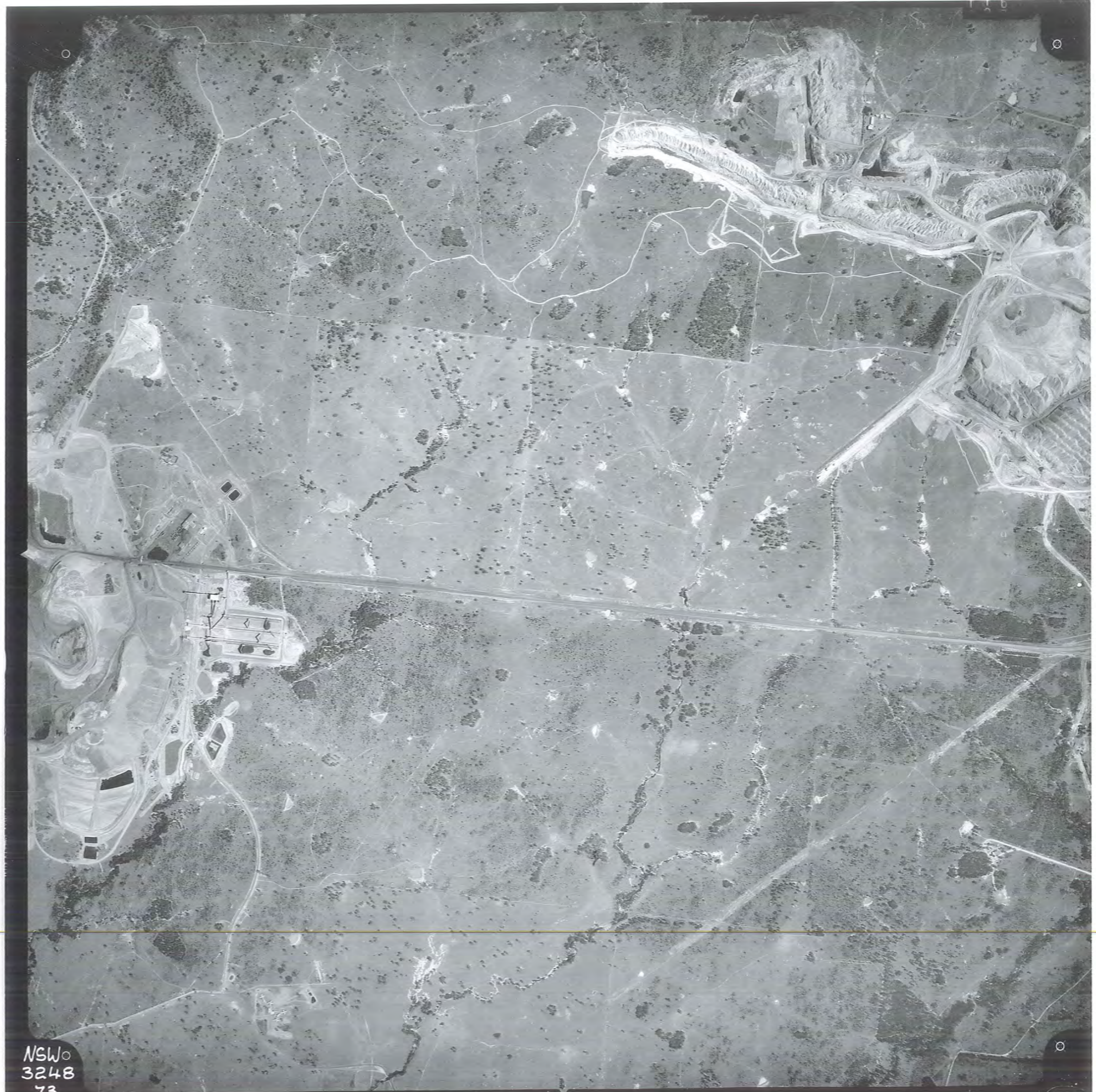
MUSWELLBROOK
1:25 000
NSW 3248

RUN 12
21.8.82

4267m ASL
151.45mm



CROWN
COPY N.S.W.
LANDS PHOTO
LOG-E



NSW
3248
73

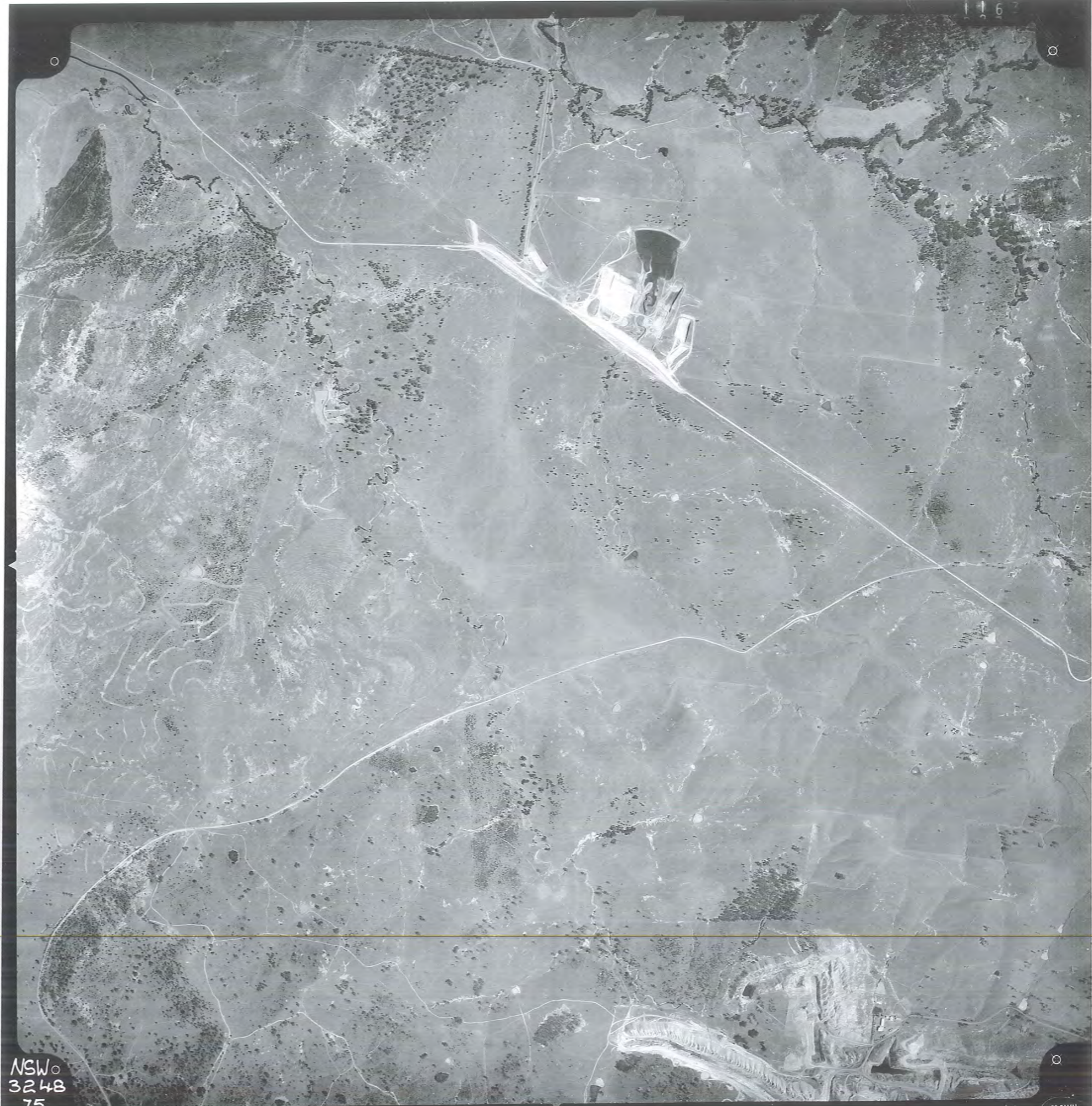
MUSWELLBROOK
1:25 000
NSW 3248

RUN 12
21.8.82

4267m ASL
151.45mm



CROWN
COPY N.S.
LANDS PHOTO
LOG-E



1167

NSW
3248
75

MUSWELLBROOK
1:25 000
NSW 3248

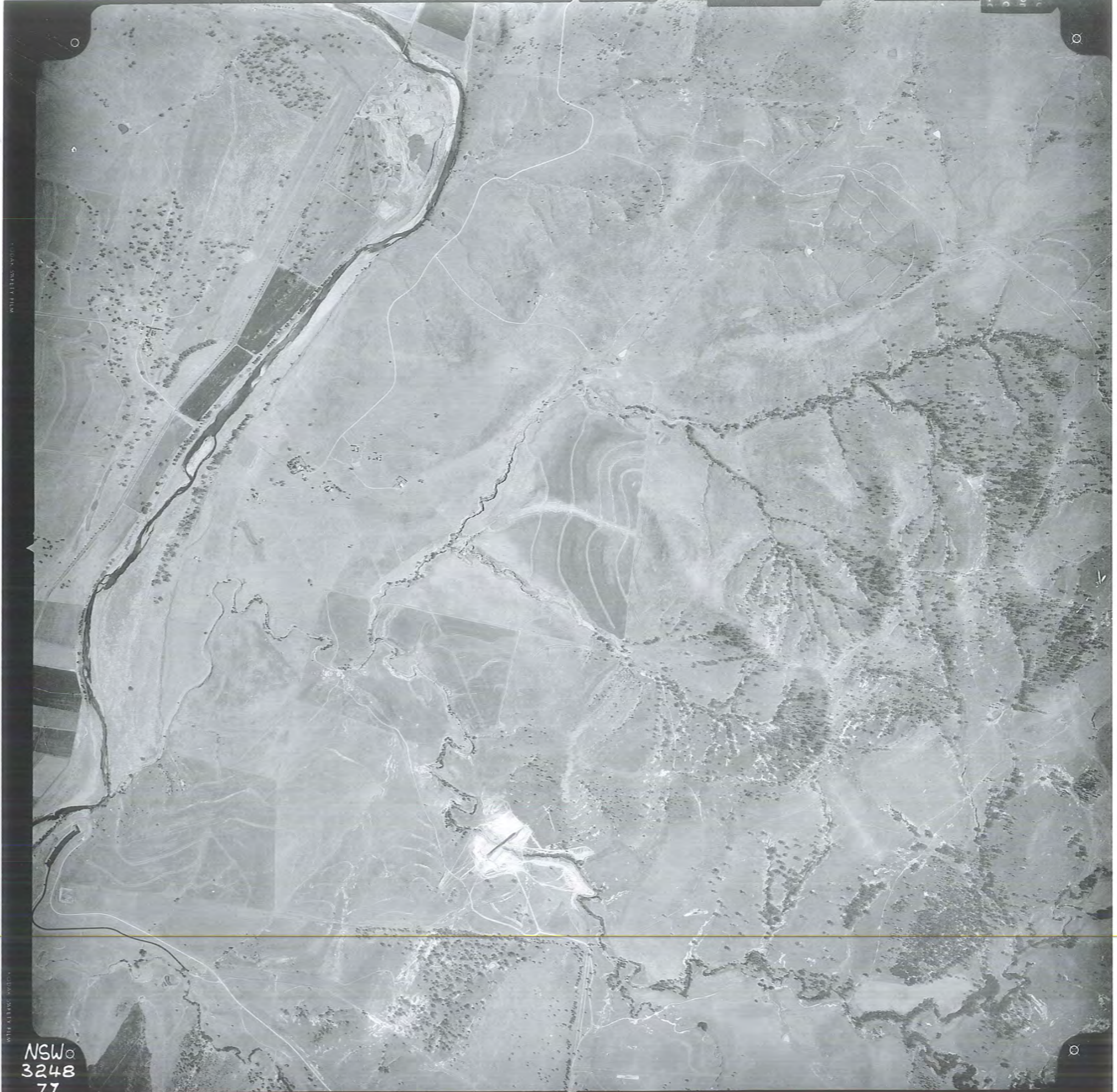
RUN 12
21.8.82

4267m ASL
151.45mm



IST COPY

CROWN
COPY N.S.W.
LANDS PHOTO
LOG-E



NSW
3248
77

MUSWELLBROOK AREA
1:25 000
(MISC. 1450) NSW 3248

RUN 12
21.8.82

4267m ASL
151.45mm



CROWN
COPY N.S.
LANDS PHO
LOG-E

128

NSW
3248
196

MUSWELLBROOK
1:25 000
NSW 3248

RUN 11
21.8.82

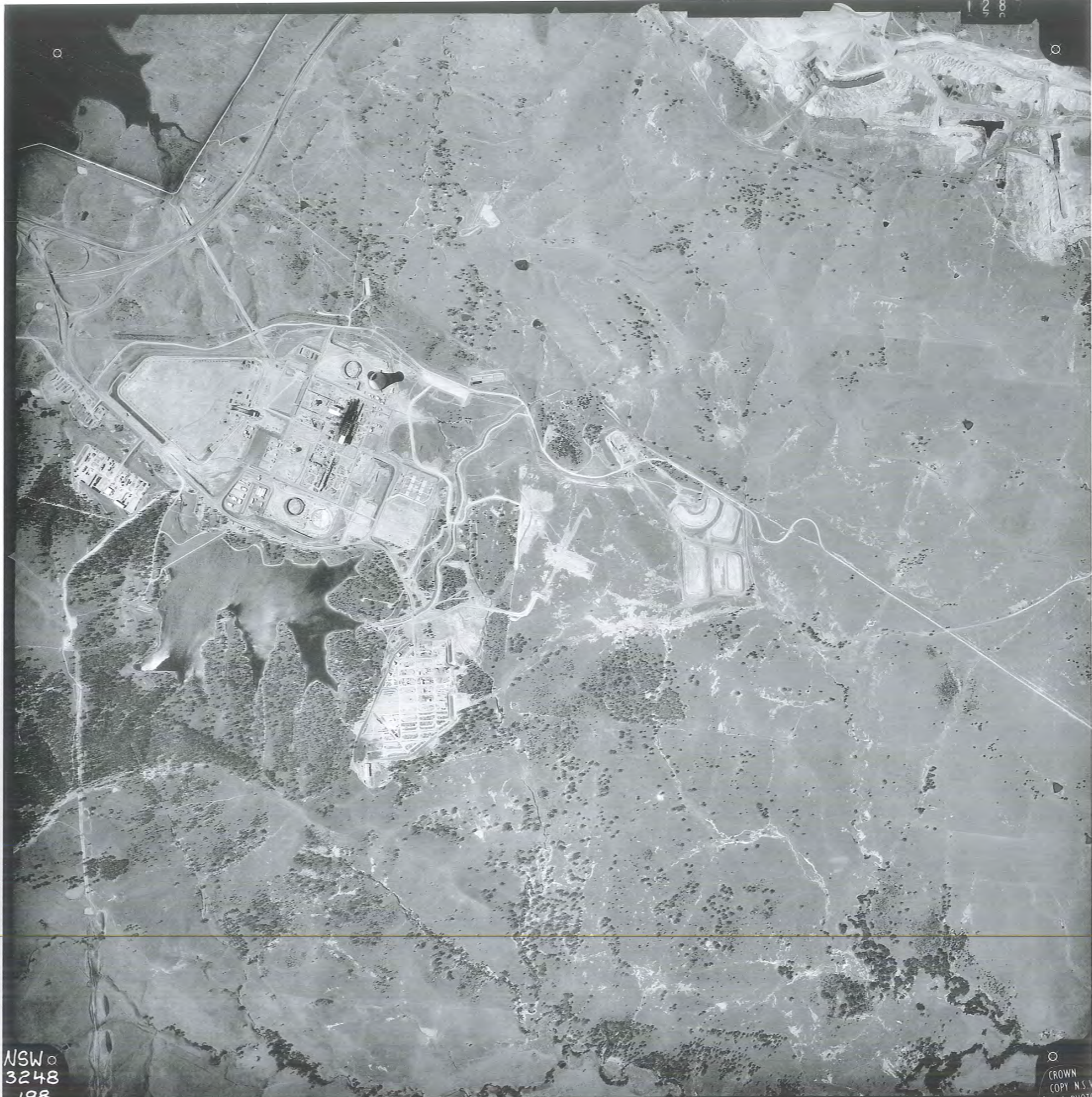
4267m ASL
151.45mm

1ST COPY

CROWN
COPY N.S.W
LANDS PHOTO
LOG-E



128



NSW
3248
198

MUSWELLBROOK
1:25 000
NSW 3248

RUN 11
21.8.82

4267m ASL
151.45mm



CROWN
COPY N.S.W.
LANDS PHOTO



NSW
3248
200

MUSWELLBROOK
1:25 000
NSW 3248



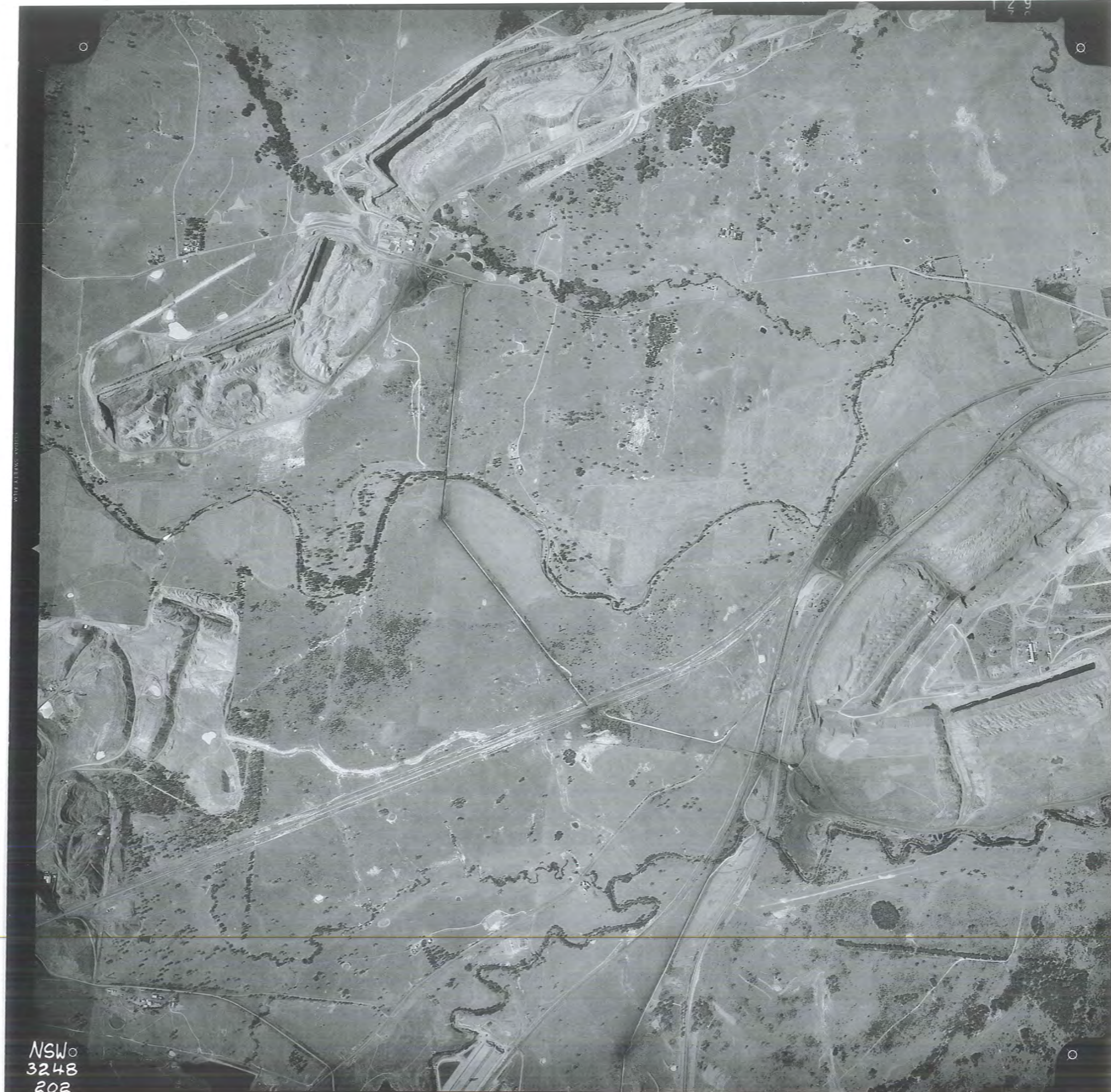
RUN 11
21.8.82



4267m ASL
151.45mm



CROWN
COPY N.S.
LANDS PHOTO



NSW
3248
202

MUSWELLBROOK
1:25 000
NSW 3248

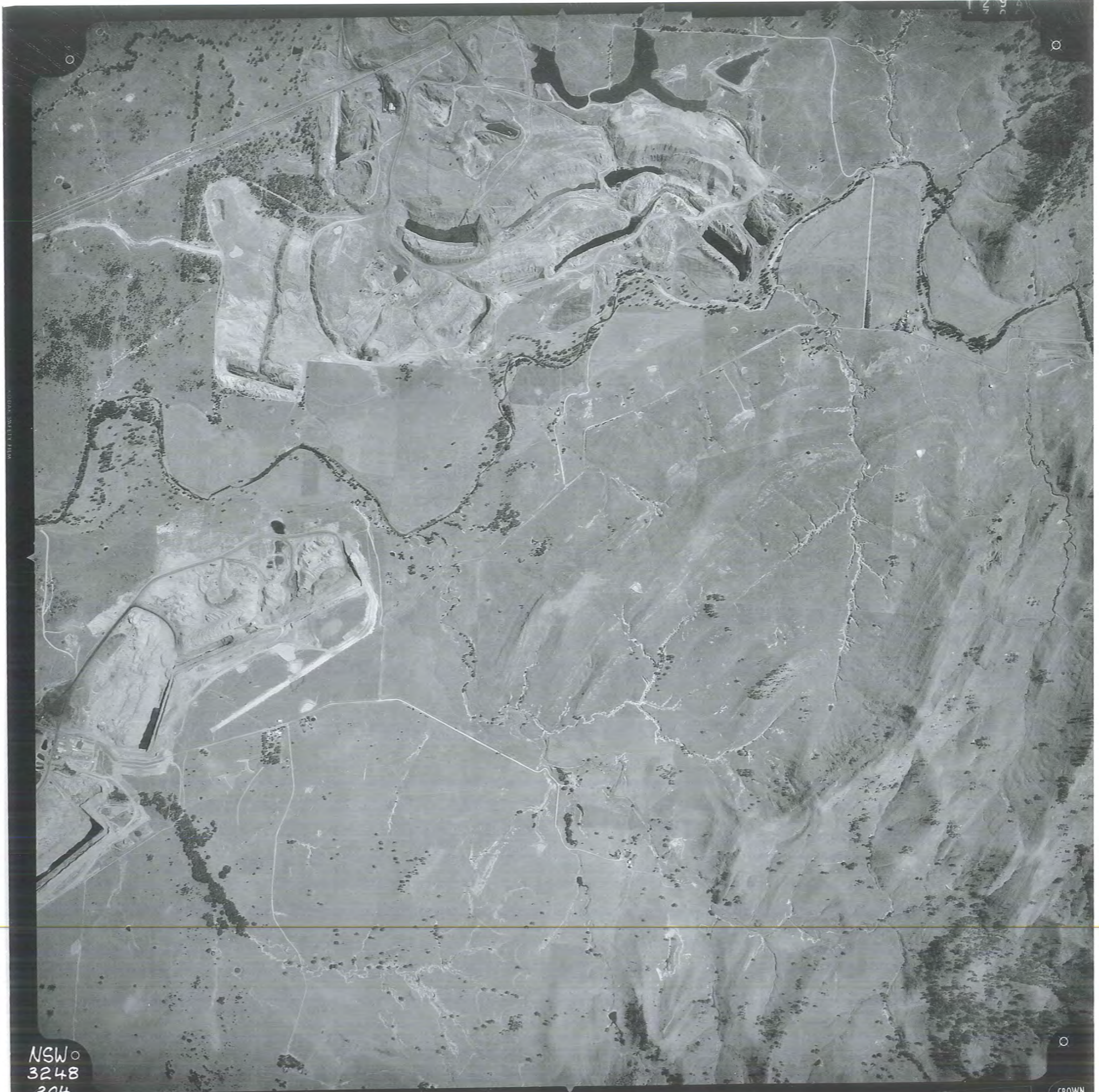
RUN 11
21.8.82

4267m ASL
151.45mm

1ST COPY

CROWN
COPY N.S.W.
LANDS PHOTO
LOG-E





NSW
3248
204

MUSWELLBROOK
1:25 000
NSW 3248

RUN 10
21.8.82

4267m ASL
151.45mm
→

IST COPY

CROWN
COPY N.S.
LANDS PHO
LOG-E





NSW
3248
206

MUSWELLBROOK
1:25 000
NSW 3248

RUN 10
21.8.82

4267m ASL
151.45mm

IST COPY

CROWN
COPY N.S.W.
LANDS PHOTO
LOG-E



UAg 1025 151.45

NSW
3248
208

MUSWELLBROOK
1:25 000
NSW 3248

RUN 10
21.8.82

4267m ASL
151.45mm

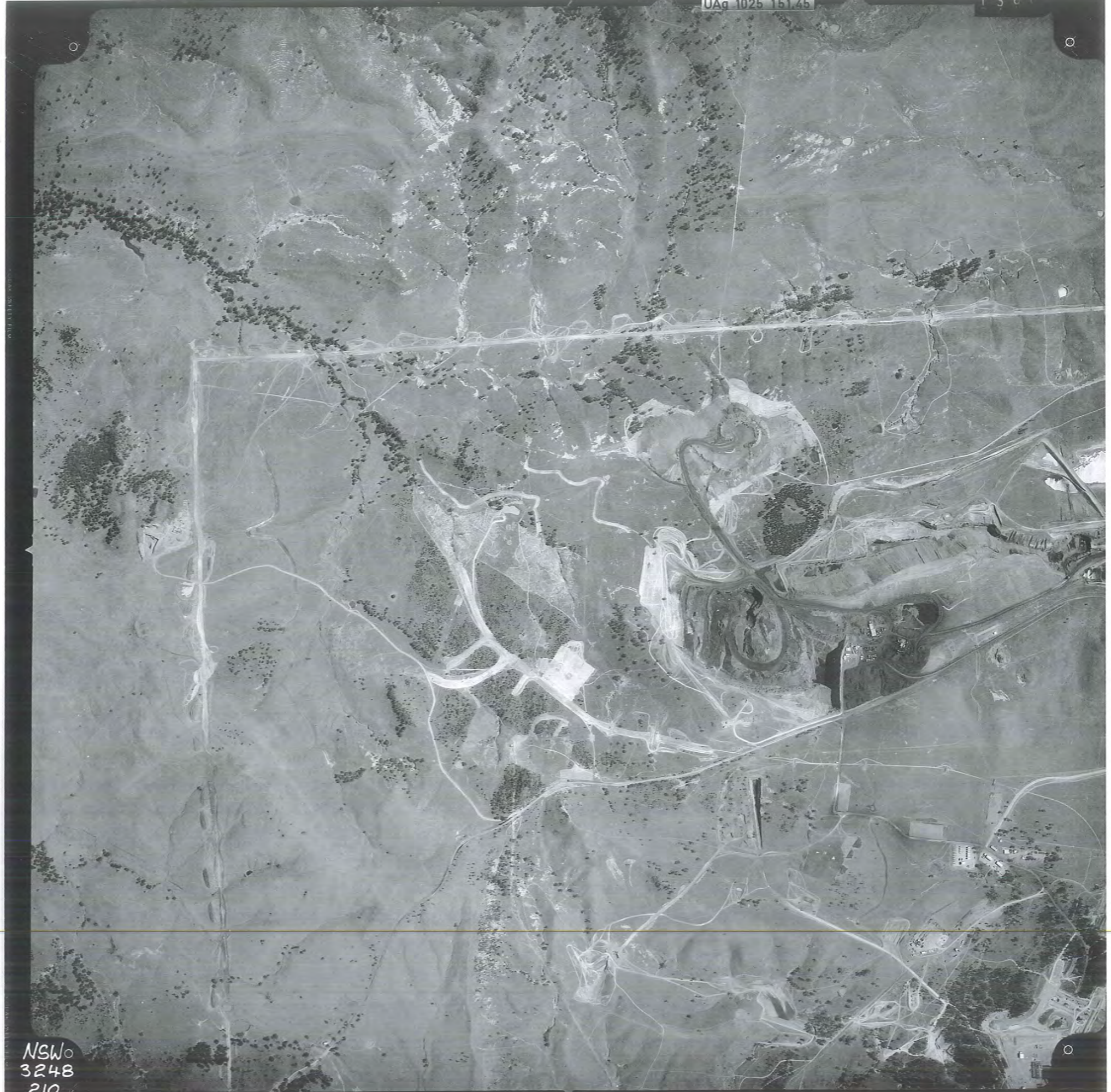
IST COPY

CROWN
COPY N.S.
LANDS PHOTO
LOG-E



UAq 1025 151.45

130



NSW
3248
210

MUSWELLBROOK
1:25 000
NSW 3248

RUN 10
21.8.82

4267m ASL
151.45mm



IST COPY

CROWN
COPY N.S.W.
LANDS PHOTO
LOG-E

NSW
3251
87

MUSWELLBROOK
1:25 000
NSW 3251

RUN 9
28.8.82

4267m ASL
151.45mm

IST COPY

CROWN
COPY N.S.W.
LANDS PHOTO
LOG-E





NSW
3251
89

COPYRIGHT
LANDS DE
NSW GOV

MUSWELLBROOK AREA
1:25000
(MISC 1450) NSW 3251

RUN 9
28.8.82

4267 M ASL
151.45MM



NSW
3251
91

MUSWELLBROOK
1:25 000
NSW 3251

RUN 9
28.8.82

4267m ASL
151.45mm



IST COPY

CROWN
COPY N.S.W.
LANDS PHOTO
LOG-E

ERM has over 100 offices
across the following
countries worldwide

Australia	Netherlands
Argentina	Peru
Belgium	Poland
Brazil	Portugal
China	Puerto Rico
France	Singapore
Germany	Spain
Hong Kong	Sri Lanka
Hungary	Sweden
India	Taiwan
Indonesia	Thailand
Ireland	UK
Italy	USA
Japan	Venezuela
Korea	Vietnam
Malaysia	
Mexico	

Environmental Resources Management

Building C, 33 Saunders Street
Pyrmont NSW 2009
Locked Bag 24,
Broadway NSW 2007

T: 61 2 8584 8888
F: 61 2 8584 8800
www.erm.com

