



COMMERCIAL IN CONFIDENCE

Macquarie Generation – Project Symphony

Liddell Power Station

Preliminary Environmental Site Assessment

Ref: 0213879RP02_DRAFT Rev02

October 2013

COMMERCIAL IN CONFIDENCE

Liddell Power Station

<i>Approved by:</i>	<u>Joseph Ferring</u>
<i>Position:</i>	<i>Project Manager</i>
<i>Signed:</i>	<u>DRAFT</u>
<i>Date:</i>	18 October, 2013
<i>Approved by:</i>	<u>Matthew Klein</u>
<i>Position:</i>	<i>Managing Partner – Asia Pacific Transaction Services</i>
<i>Signed:</i>	<u>DRAFT</u>
<i>Date:</i>	18 October, 2013

Preliminary Environmental Site Assessment

Macquarie Generation - Project Symphony

October 2013

Environmental Resources Management Australia Pty Ltd Quality System

0213879RP02 DRAFT Rev02

www.erm.com

This disclaimer, together with any limitations specified in the report, apply to use of this report. This report was prepared in accordance with the contracted scope of services for the specific purpose stated and subject to the applicable cost, time and other constraints. In preparing this report, ERM relied on: (a) client/third party information which was not verified by ERM except to the extent required by the scope of services, and ERM does not accept responsibility for omissions or inaccuracies in the client/third party information; and (b) information taken at or under the particular times and conditions specified, and ERM does not accept responsibility for any subsequent changes. This report has been prepared solely for use by, and is confidential to, the client and ERM accepts no responsibility for its use by other persons. This report is subject to copyright protection and the copyright owner reserves its rights. This report does not constitute legal advice.

10:06:49 26/09 0022012 NSW4796 R12 M2366 MUSWELLBROOK 1:25000 GDA 532.4421 E150.9100 4269m <-270

WILD 3544043-5
No 13217 152.76



MUSWELLBROOK
1:25000 Approx. Scale
NSW4796 (M2366)

RUN 12
26-09-03
76-100

152.76 mm

10:05:52 26/09 0322008 NSW4796 R12 M2366 MUSWELLBROOK 1:25000 GDA S32.4416 E150.9555 4285m <-268

WILD 13/4/00 5
No 13217 152.76

0019

FS100 1/ 500 f/4.0 FF2.0 EC 0 SP- v/h.01786 00% dt029.0 ds005 26.7V +66mb ER00 CAMS202

MUSWELLBROOK
1:25000 Approx. Scale
NSW4796 (M2366)

RUN 12
26-09-03
76-100

152.76 mm



© Department of Lands
All Rights Reserved

10:04:53 26/09 0322004 NSW4796 R12 M2366 CAMBERWELL 1:25000 GDA S32.4404 E151.0010 4254m <-269



WILD 1514 050-5
No 13207 152.76

0077

FS100 1/ 360 f/4.0 FF2.0 EC 0 SP- v/h.01705 00% dt029.8 ds006 26.3v T65mb ER00 CAM5202

MUSWELLBROOK
1:25000 Approx. Scale
NSW4796 (M2366)

RUN 12
26-09-03
76-100

152.76 mm



© Department of Lands
All Rights Reserved

10:04:24 26/09 0322002 NSW4796 R12 M2366 CAMBERMELL 1:25000 GDA S32.4399 E151.0232 4198m S-269



WILD 1574 029-5
No 13217 152.76

0016

FS100 1/ 400 f/4.0 FF2.0 EC 0 SP- v/h.02008 00% dt221.7 ds007 26.6V -66mb ER00 CAM5202

MUSWELLBROOK
1:25000 Approx. Scale
NSW4796 (M2366)

RUN 12
26-09-03
76-100

152.76 mm



WILD 1574 UAG-S
No 13217 152.76

0092



FS100 1/ 320 F/4.0 FF--- EC--- SP- WH.02625 00% dt020.0 ds012 26.7V -66mb ER00 CAM5202

CAMBERWELL
1:25000 Approx. Scale
NSW4928 (M2487)

RUN 12
12-11-05
88-110

152.76 mm



© Department of Lands
All Rights Reserved

WILD 15/4048-5
No 19217 152.76

0070

09:59:13 26/09 0321990 NSW4796 M1 M2366 MUSWELLBROOK 1:25000 GDA S32.4008 E150.9086 4262m -0.90



MUSWELLBROOK
1:25000 Approx. Scale
NSW4796 (M2366)

RUN 11
26-09-03
51-75

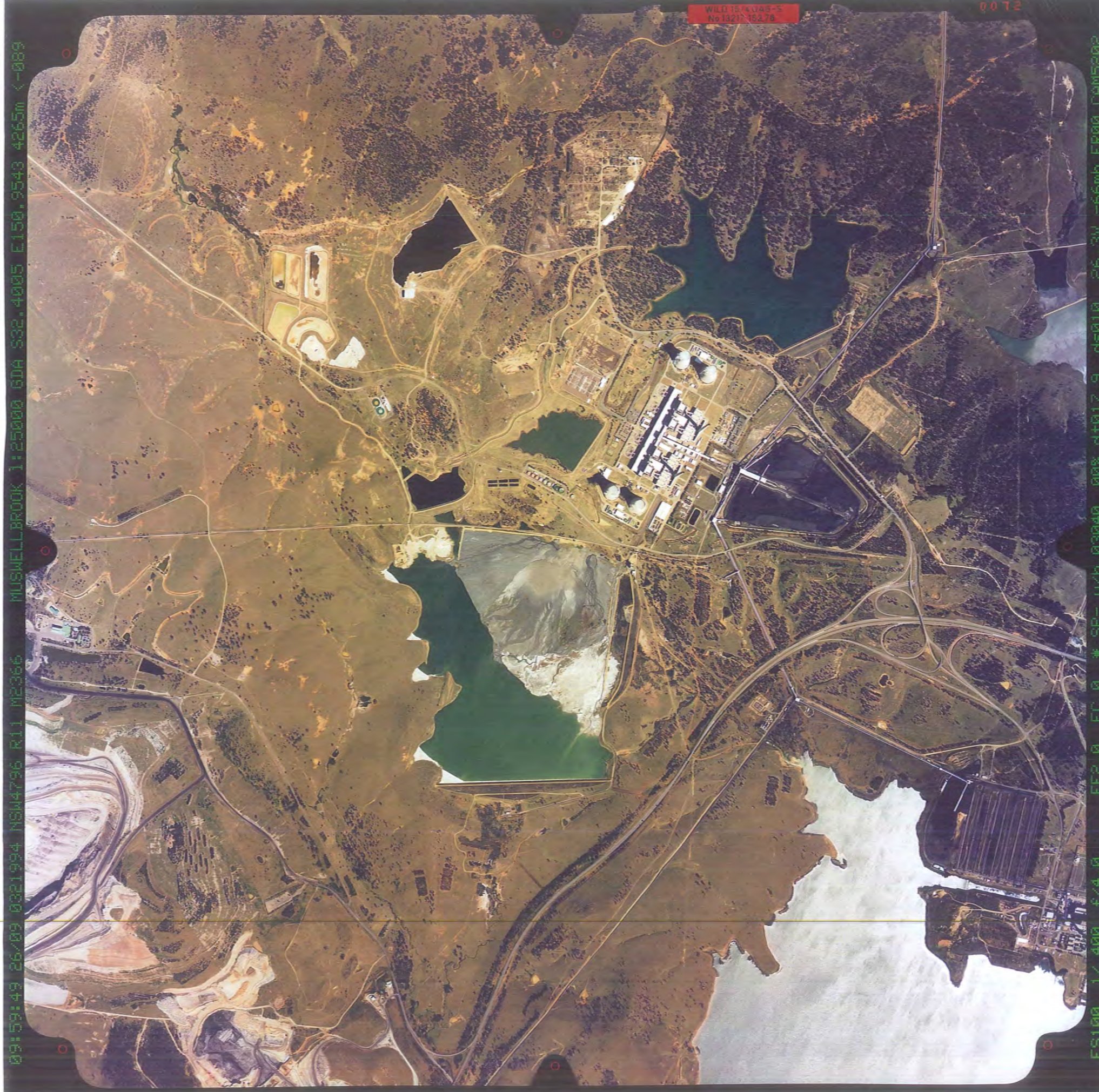
152.76 mm



09:59:49 26/09 0321994 NSW4796 R11 M2366 MUSWELLBROOK 1:25000 GDA 832.4005 E150.9543 4265m <-089

WILD 15-4045-5
No 1321 152.76

0072



FS100 1/ 400 f/4.0 FF2.0 EC 0 * SP- v/h. 03040 00% dt017.9 ds010 26.3V 1-66mb ER00 CAM5202

MUSWELLBROOK
1:25000 Approx. Scale
NSW4796 (M2366)

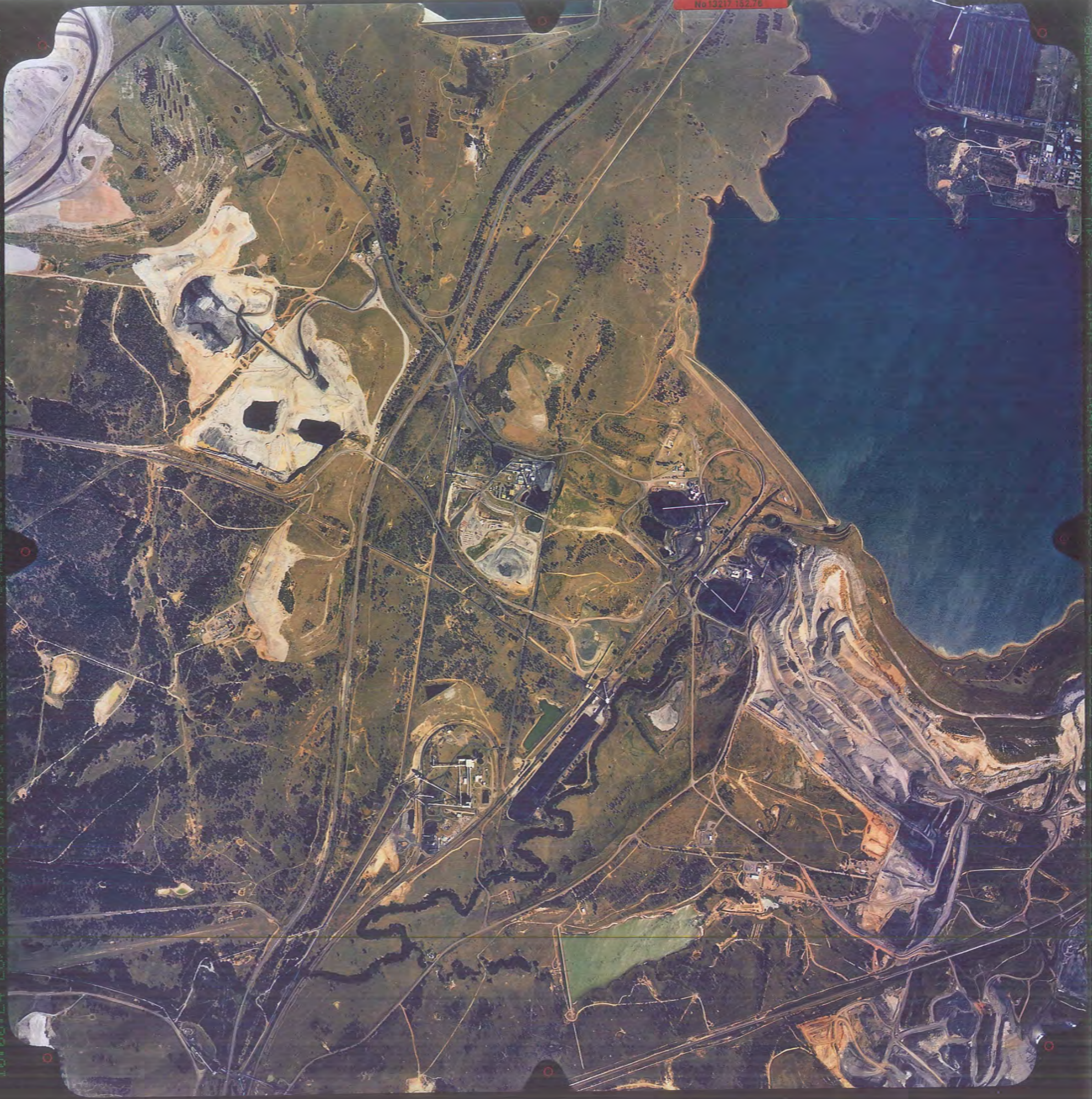
RUN 11
26-09-03
51-75

152.76 mm
➔

© Department of Lands
All Rights Reserved

10:00:24 26-09-03 0321998 NSW4796 R11 M2366 MUSWELLBROOK 1:25000 GDA 832.4002 E150.9991 4256m ~090

No 15210 15276



MUSWELLBROOK
1:25000 Approx. Scale
NSW4796 (M2366)

RUN 11
26-09-03
51.75

152.76 mm



WLD 13/4043-5
No 13217 152.76

0075

10:00:42 26/09 0322000 NSW4796 R11 M2366 CAMBERWELL 1:25000 GDA S32.4003 E151.0223 4267m <-090



MUSWELLBROOK
1:25000 Approx. Scale
NSW4796 (M2366)

RUN 11
26-09-03
51-75

152.76 mm



© Department of Lands
All Rights Reserved

WILD 1574 UAB-S
No 13217 15276

0181



CAMBERWELL
1:25000 Approx. Scale
NSW4924 (M2487)

RUN 11
11-10-05
178-202

152.76 mm



© Department of Lands
All Rights Reserved

09:39:44 26/09 0321904 NSW4796 R10 M2366 CAMBERWELL 1:25000 60A 882.3637 E151.0007 4233m x-270

WILD 1574 UAG-S
No 13217 152.76

0027



MUSWELLBROOK
1:25000 Approx. Scale
NSW4796 (M2366)

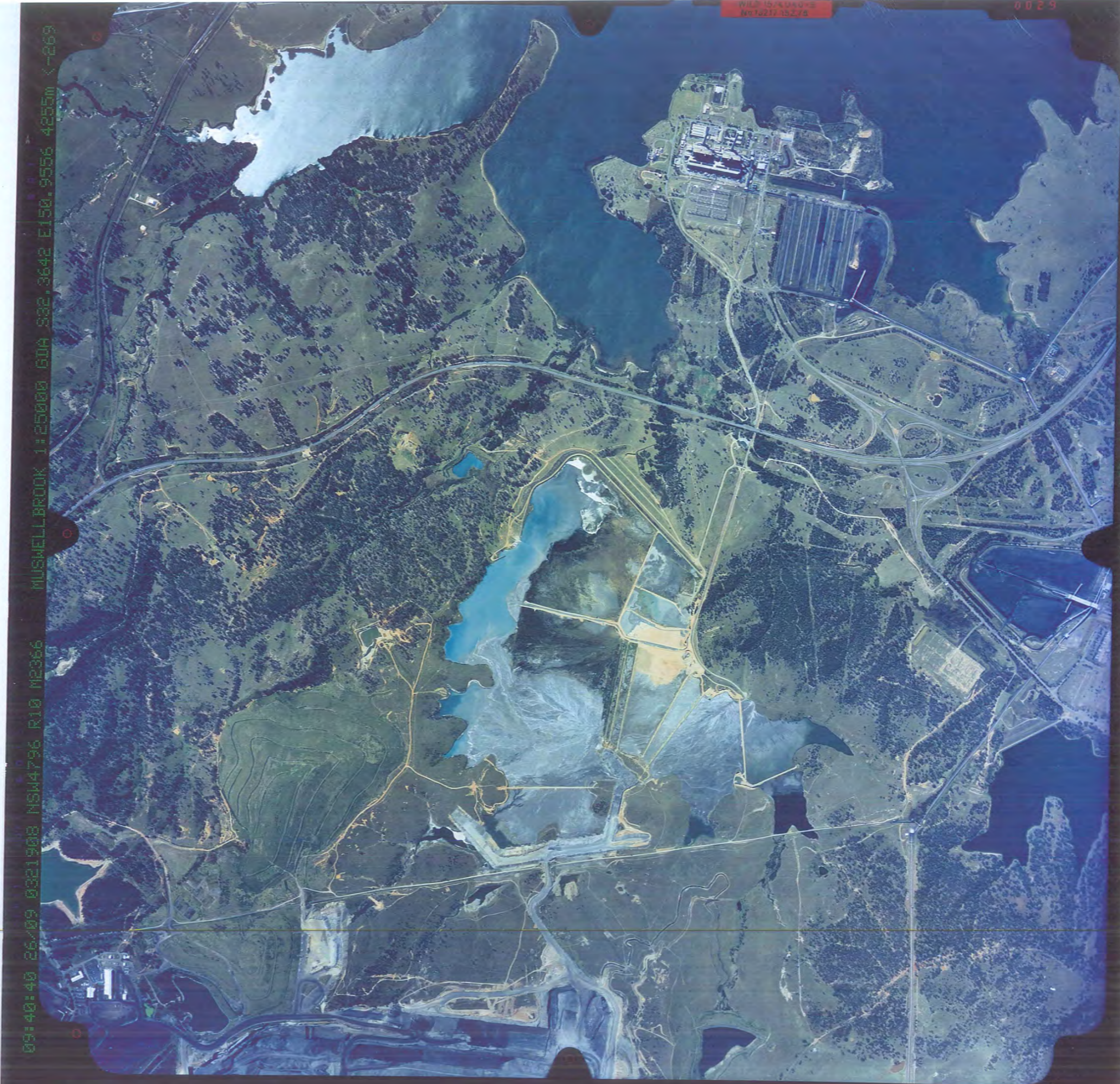
RUN 10
26-09-03
26-50

152.76 mm



© Department of Land
All Rights Reserved

09:40:40 26/09 0321908 NSW4796 R10 M2366 MUSWELLBROOK 1:25000 GDA 532.3642 E150.9556 4255m 4-269



MUSWELLBROOK
1:25000 Approx. Scale
NSW4796 (M2366)

RUN 10
26-09-03
26-50

152.76 mm



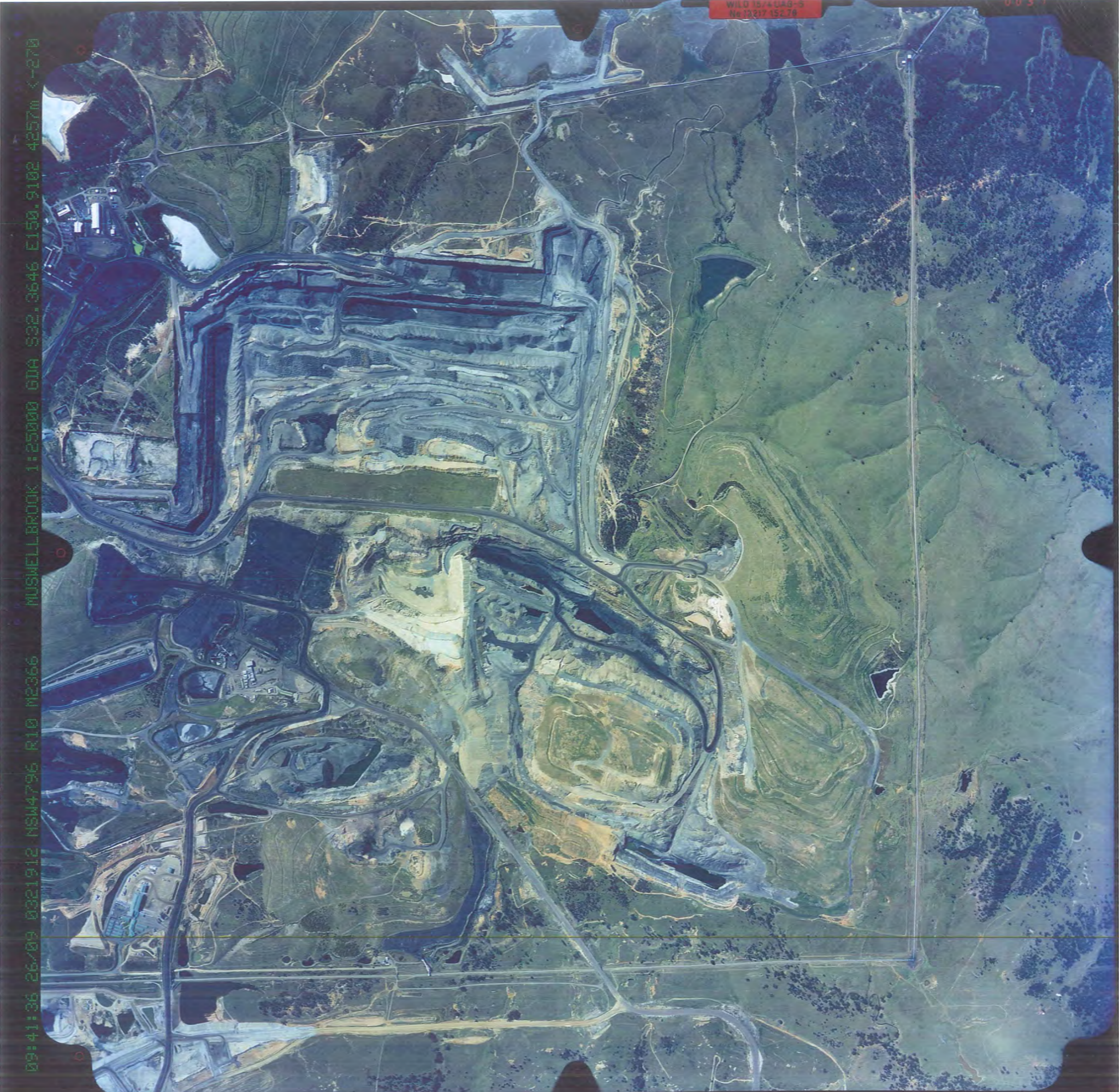
Department of
AP

WLS 1576010-15
M2366 152.76

0029

09:41:36 26/09 0321912 NSW4796 R10 M2366 MUSWELLBROOK 1:25000 GDA 532.3646 E150.9102 4257m <-270

WILD 15/4048-3
No 12217 152.76



MUSWELLBROOK
1:25000 Approx. Scale
NSW4796 (M2366)

RUN 10
26-09-03
26-50

152.76 mm



Department of Land
and Water Conservation

CAMBERWELL
1:25000 Approx. Scale
NSW4924 (M2487)

RUN 10
11-10-05
128-152

152.76 mm



© Department of Lands
All Rights Reserved

10:25:05

WILD 1514UAB-5
No 13217 152.76

0.131

FS100 1/400 f/4.0 FF--- EC--- SF- w/h.02584 00% dt018.5 ds009 26.2v -64mb ER00 CAM5202

09:33:40 26/09 0321890 NSW4796 R09 M2366 MUSWELLBROOK 1:25000 GDA 982.3245 E150.9093 4229m <-091

WILD 15/4 UAB-5
No 13212 152.78

0020



MUSWELLBROOK
1:25000 Approx. Scale
NSW4796 (M2366)

RUN 9
26-09-03
01-25

152.76 mm

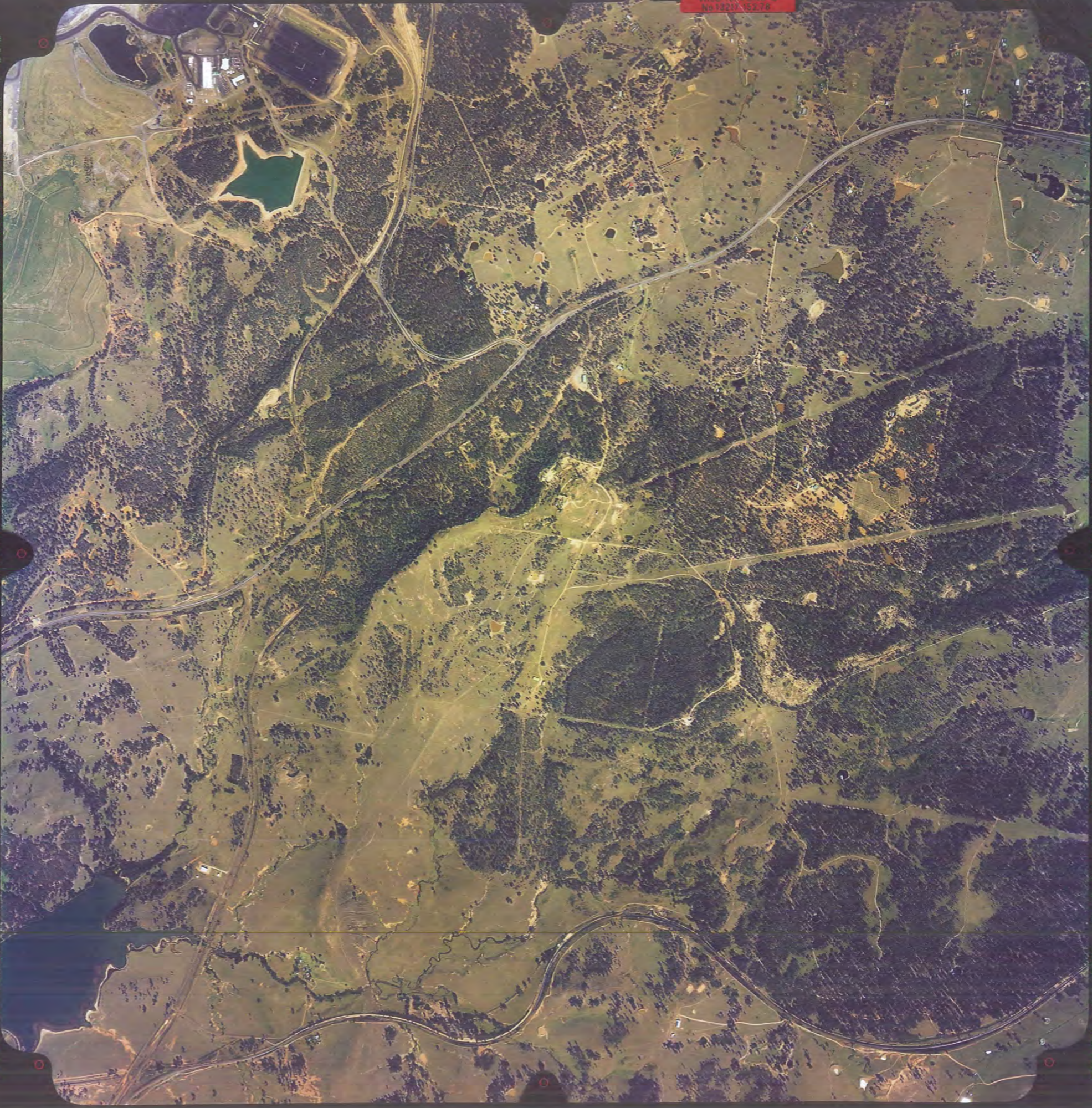


© Department of Lands
All Rights Reserved

09:34:16 26/09 0321894 NSW4796 R09 M2366 MUSWELLBROOK 1:25000 GDA S32.3252 E150.9544 4245m <-091

WILD TEXAS 4796
No 1120/3276

0022



ES100 1/360 f/4.0 FF2.0 FC 0 SF- w/h.02834 008 dt012.3 d101 26.2v -69mb FROM CHM5202

MUSWELLBROOK
1:25000 Approx. Scale
NSW4796 (M2366)

RUN 9
26-09-03
01-25

152.76 mm



© Department of Lands
All Rights Reserved

09:34:52 26/09 0021898 NSM4796 R09 M2366 MUSWELLBROOK 1:25000 GDA S82.3253 E150.9995 4278m <-089

WILD 15/A04B-5
No 19237 182.78

0024



FS100 1/ 380 f/4.0 FF2.0 EC.0 SP- v/h.02834 00% dt018.3 ds010 25.8V -69mb FROM CAM5202

MUSWELLBROOK
1:25000 Approx. Scale
NSW4796 (M2366)

RUN 9
26-09-03
01-25

152.76 mm



Department of Lands
All Rights Reserved



WILD 15/4 UAB-3
No 13217 152.76

0174

10:45:33 11/10 0518850 NSW4924 R09 M2487 CAMBERWELL 1:25000 604 532.3251 6151.0471 48667m x-270

FS100 1/400 f/4.0 FF--- EU--- SP v/h.01919 008 dt025.6 d5007 26.4v -6.3mb ER00 CAM5262

CAMBERWELL
1:25000 Approx. Scale
NSW4924 (M2487)

RUN 9
11-10-05
153-177

152.76 mm





