



COMMERCIAL IN CONFIDENCE

Macquarie Generation – Project Symphony

Liddell Power Station

Preliminary Environmental Site Assessment

Ref: 0213879RP02_DRAFT Rev02

October 2013

COMMERCIAL IN CONFIDENCE

Liddell Power Station

Approved by:	Joseph Ferring
Position:	Project Manager
Signed:	DRAFT
Date:	18 October, 2013
Approved by:	Matthew Klein
Position:	Managing Partner – Asia Pacific Transaction Services
Signed:	DRAFT
Date:	18 October, 2013

Preliminary Environmental Site Assessment

Macquarie Generation - Project Symphony

October 2013

Environmental Resources Management Australia Pty Ltd Quality System

0213879RP02 DRAFT Rev02

www.erm.com

This disclaimer, together with any limitations specified in the report, apply to use of this report. This report was prepared in accordance with the contracted scope of services for the specific purpose stated and subject to the applicable cost, time and other constraints. In preparing this report, ERM relied on: (a) client/third party information which was not verified by ERM except to the extent required by the scope of services, and ERM does not accept responsibility for omissions or inaccuracies in the client/third party information; and (b) information taken at or under the particular times and conditions specified, and ERM does not accept responsibility for any subsequent changes. This report has been prepared solely for use by, and is confidential to, the client and ERM accepts no responsibility for its use by other persons. This report is subject to copyright protection and the copyright owner reserves its rights. This report does not constitute legal advice.

WILD 15/4 UAS-3
No 19217 19279

0121

NSW4170 APPROX PHOTO SCALE 1:25000 27-11-93 4:06AM A51 MUSWELLBROOK RUN 12

127

MUSWELLBROOK
1:25000 Approx Scale
NSW4170 (Colour)

RUN 12
27-11-93
127-152

4206 M ASL
152.76mm



COPYRIGHT
NSW GOVT.

WILD 15/4 UAG'S
No 13217 152.76

NSW4170 APPROX PHOTO STA F 125000 27-11-93 APPROX ASI MUSWELLBROOK RUN 12

128

MUSWELLBROOK
1:25000 Approx Scale
NSW4170 (Colour)

RUN 12
27-11-93
127-152

4206 M ASL
152.76mm



COPYRIGHT
NSW GOVT.



WILD 15/40A6-5
No 13217 152.78

0130

MUSWELLBROOK RUN 12



130

MUSWELLBROOK
1:25000 Approx Scale
NSW4170 (Colour)

RUN 12
27-11-93
127-152

4206 M ASL
152.76mm



COPYRIGHT
NSW GOVT

WILD 1574 DAB-5
No 13217 152.78

0 132



132

MUSWELLBROOK
1:25000 Approx Scale
NSW4170 (Colour)

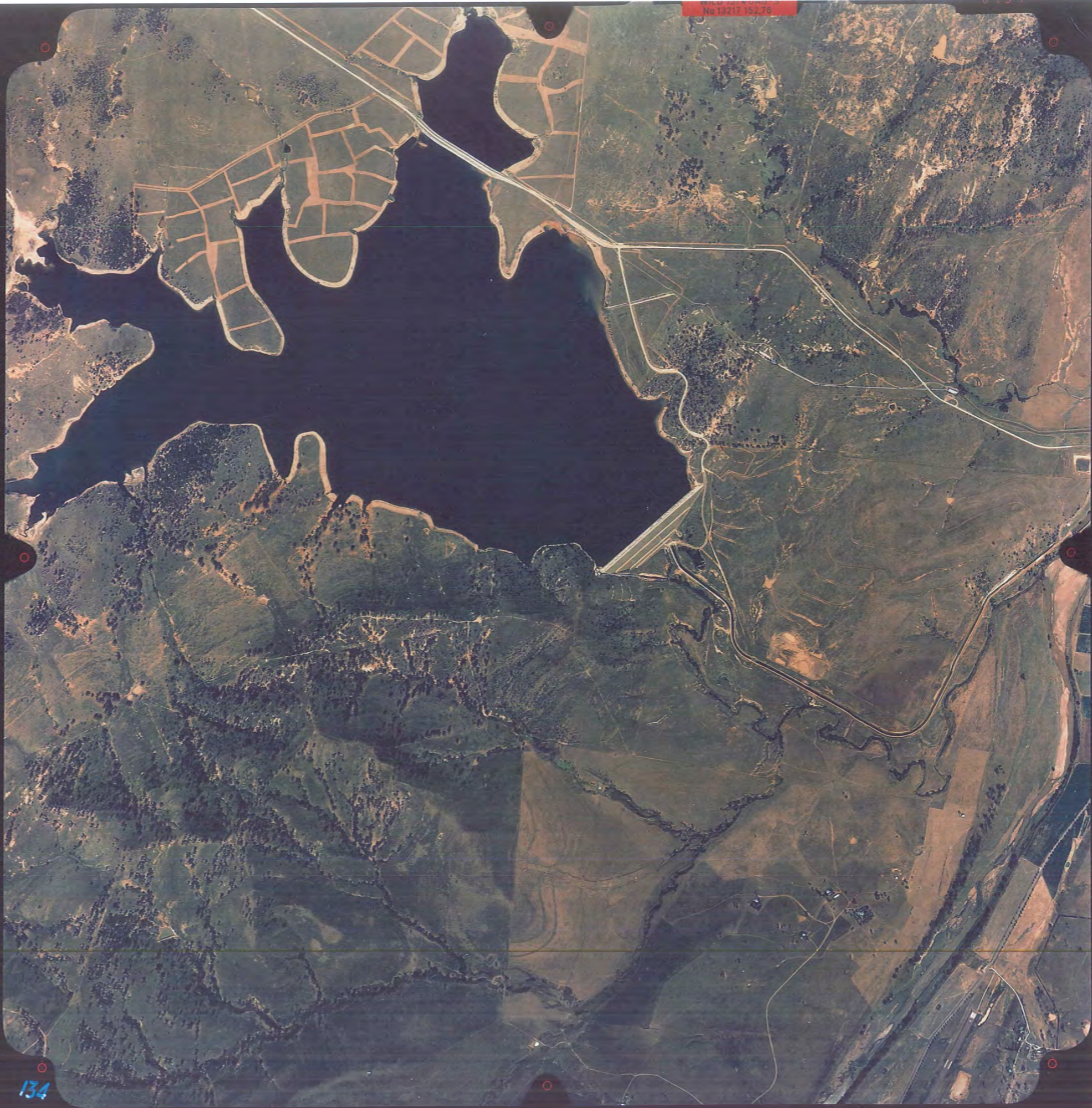
RUN 12
27-11-93
127-152

4206 M ASL
152.76mm



© Department of Lands
All Rights Reserved

No 13217 152.78



134

MUSWELLBROOK
1:25000 Approx Scale
NSW4170 (Colour)

RUN 12
27-11-93
127-152

4206 M ASL
152.76mm



© Department of Lands
All Rights Reserved

WILD 15/43A9-S
No 13217 152.76

0 12 0

NSW4170 APPROX PHOTO COORDINATES 4115M ASL MUSWELLBROOK RUN 11



120

MUSWELLBROOK
1:25000 Approx Scale
NSW4170 (Colour)

RUN 11
27-11-93
103-126

4115 M ASL
152.76mm



© Department of Land
All Rights Reserved

WILD 1574 UAG-5
No 13217 152.78

0122



122

MUSWELLBROOK
1:25000 Approx Scale
NSW4170 (Colour)

RUN 11
27-11-93
103-126

4115 M ASL
152.76mm



© Department of Land
All Rights Reserved

WILD 1574 DAG-5
No 13217 152.76

0124

MUSWELLBROOK 27-11-93 4115 M ASL 152.76mm

124

MUSWELLBROOK
1:25000 Approx Scale
NSW4170 (Colour)

RUN 11
27-11-93
103-126

4115 M ASL
152.76mm



COPYRIGHT
NSW GOVT.



WILD 15/4 UAG-S
No 13217 152.78

0 126

NSW4170 APPR 15 1993 415M ASL MUSWELLBROOK RUN 11

126

MUSWELLBROOK
1:25000 Approx Scale
NSW4170 (Colour)

RUN 11
27-11-93
103-126

4115 M ASL
152.76mm



COPYRIGHT
NSW GOVT.



WILD 15/4 JAG-S
No 13217 152.76

0077

NSW4170 APPROX PHOTO SCALE 1:25000 27-11-93 4115 M ASL MUSWELLBROOK RUN 10

77

MUSWELLBROOK
1:25000 Approx Scale
NSW4170 (Colour)

RUN 10
27-11-93
77-102

4115 M ASL
152.76mm



COPYRIGHT
NSW GOVT



WILD 15/4 BAG-5
No 13217 152.76

0079

NSW4170 APPR PHOTO SCALE F 1:25000 27-11-93 4115M ASL MUSWELLBROOK RUN 10



79

MUSWELLBROOK
1:25000 Approx Scale
NSW4170 (Colour)

RUN 10
27-11-93
77-102

4115 M ASL
152.76mm

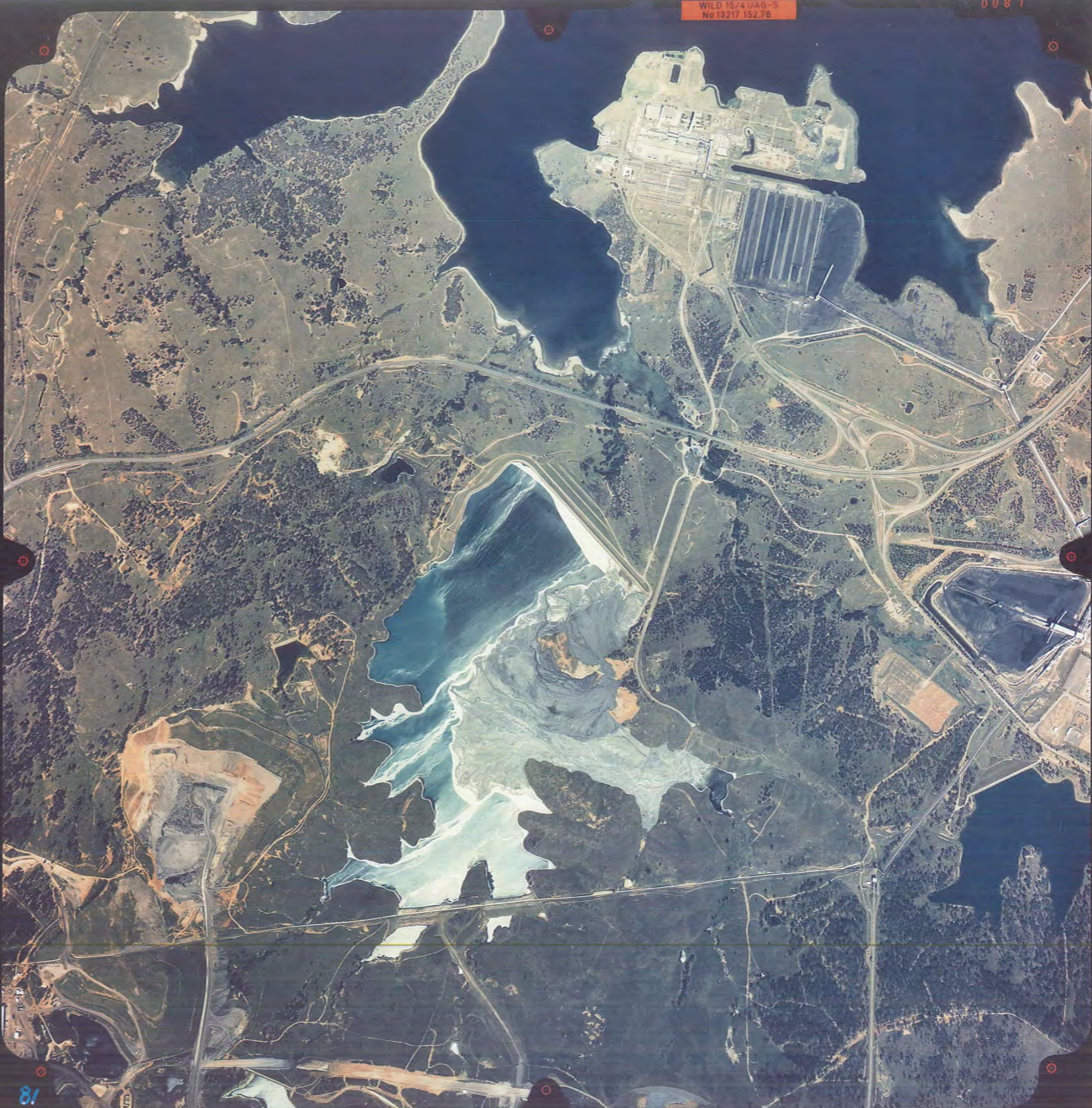


COPYRIGHT
NSW GOVT

WILD 15/4 UAG-S
No 13217 152.76

0081

NSW4170 APPROX PHOTO SCALE 1:25000 27-11-93 4115 M ASL MUSWELLBROOK RUN 10



81

MUSWELLBROOK
1:25000 Approx Scale
NSW4170 (Colour)

RUN 10
27-11-93
77-102

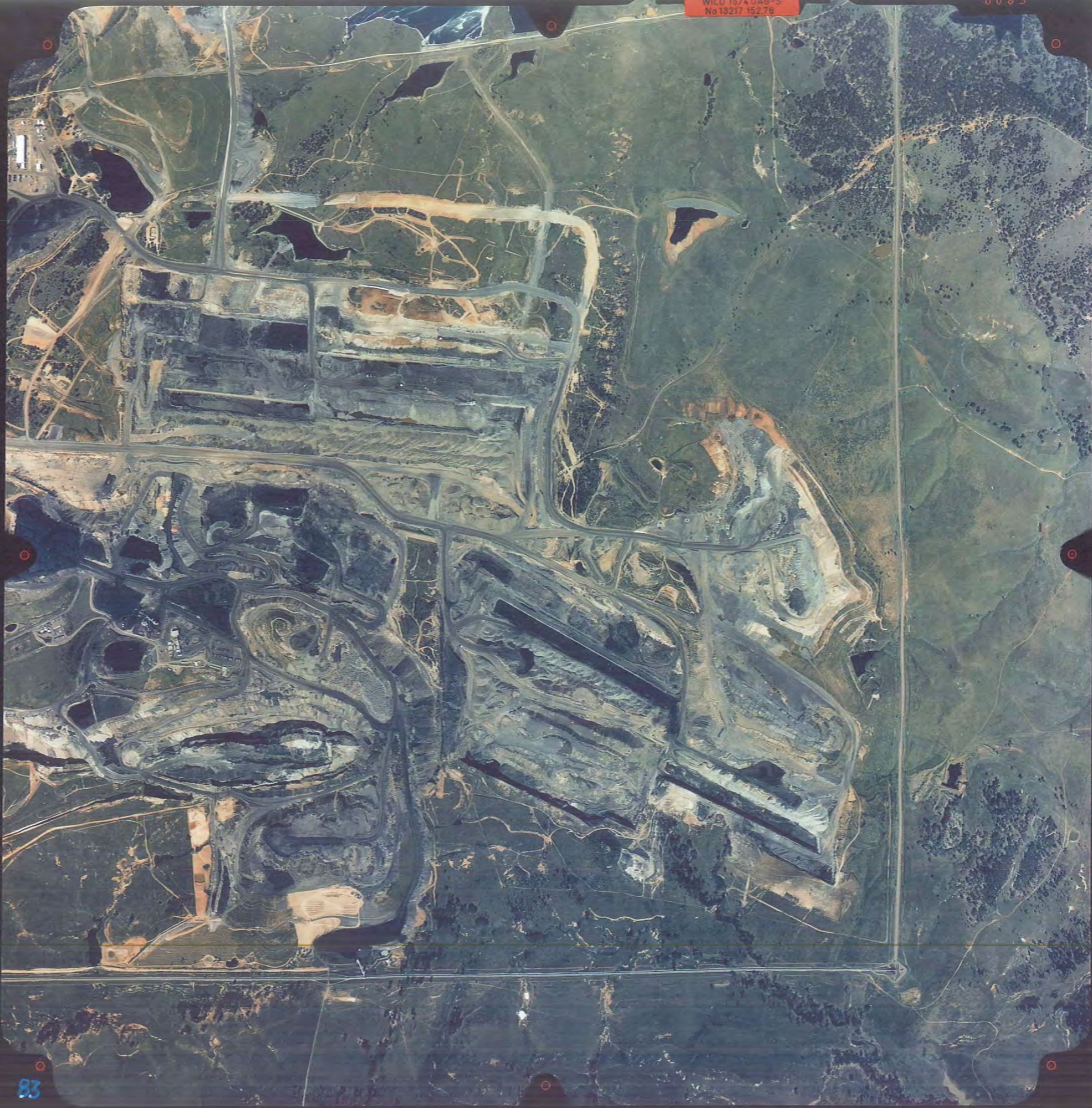
4115 M ASL
152.76mm



COPYRIGHT
NSW GOVT

WILD 15/4 UAB-S
No 13217 152.76

0083



83

MUSWELLBROOK
1:25000 Approx Scale
NSW4170 (Colour)

RUN 10
27-11-93
77-102

4115 M ASL
152.76mm



© LAND INFORMATION CENTRE
Panorama Avenue, Bathurst.

WILD 15/4115B-S
No 13217 152.76

0070

MUSWELLBROOK RUN 9



70

MUSWELLBROOK
1:25000 Approx Scale
NSW4170 (Colour)

RUN 9
27-11-93
52-76

4115 M ASL
152.76m



COPYRIGHT
NSW GOVT

WILD 15/4 UAG-5
No 13217 152.76

0072

NSW4170 PHOTO SCALE 1:25000 27-11-93 4115 M ASL MUSWELLBROOK RUN 9

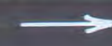


72

MUSWELLBROOK
1:25000 Approx Scale
NSW4170 (Colour)

RUN 9
27-11-93
52-76

4115 M ASL
152.76mm

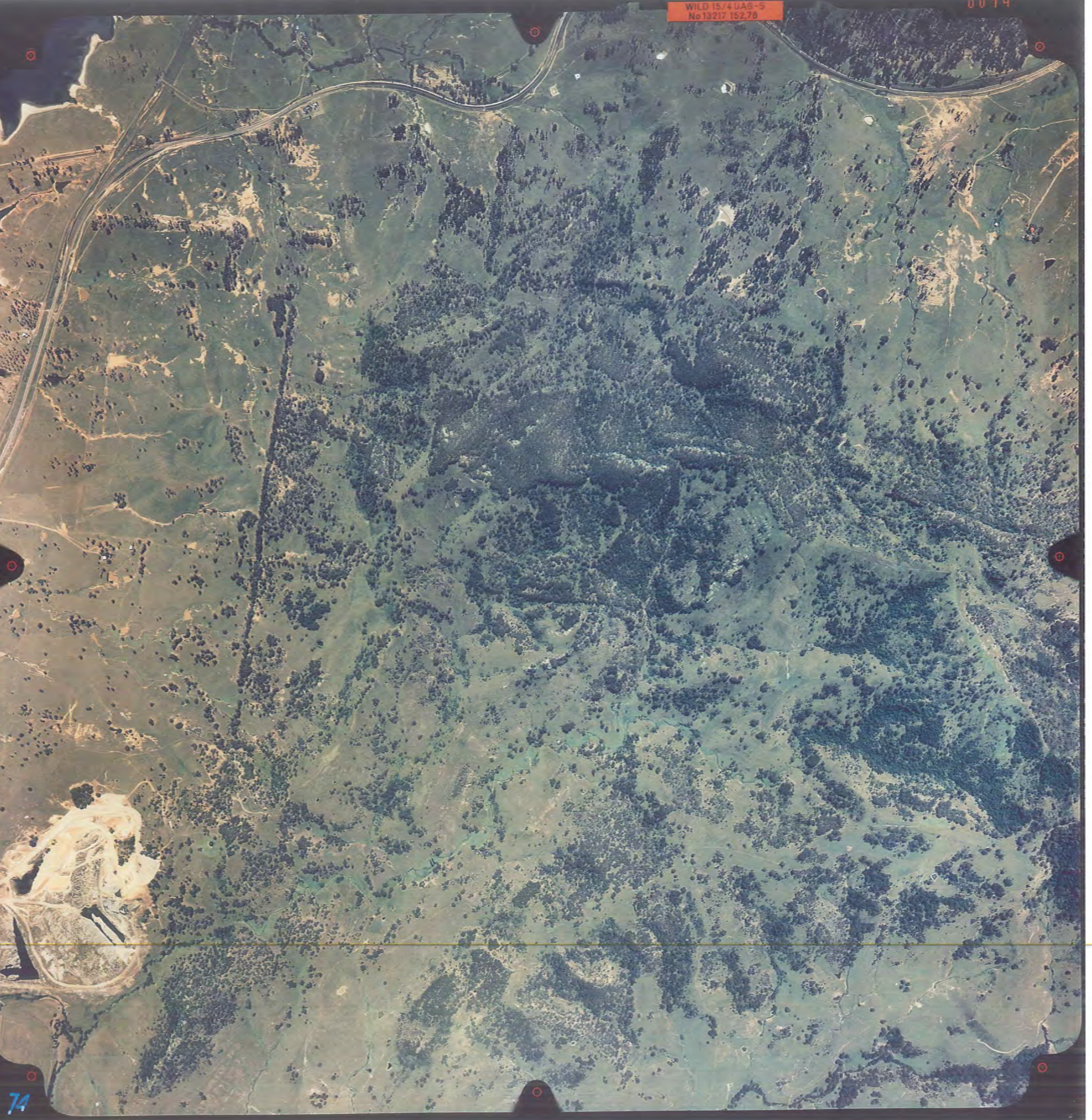


COPYRIGHT
NSW GOVT

WILD 15/4 DAG-S
No 13217 152.78

0074

MUSWELLBROOK RUN 9



74

MUSWELLBROOK
1:25000 Approx Scale
NSW4170 (Colour)

RUN 9
27-11-93
52-76

4115 M ASL
152.76mm

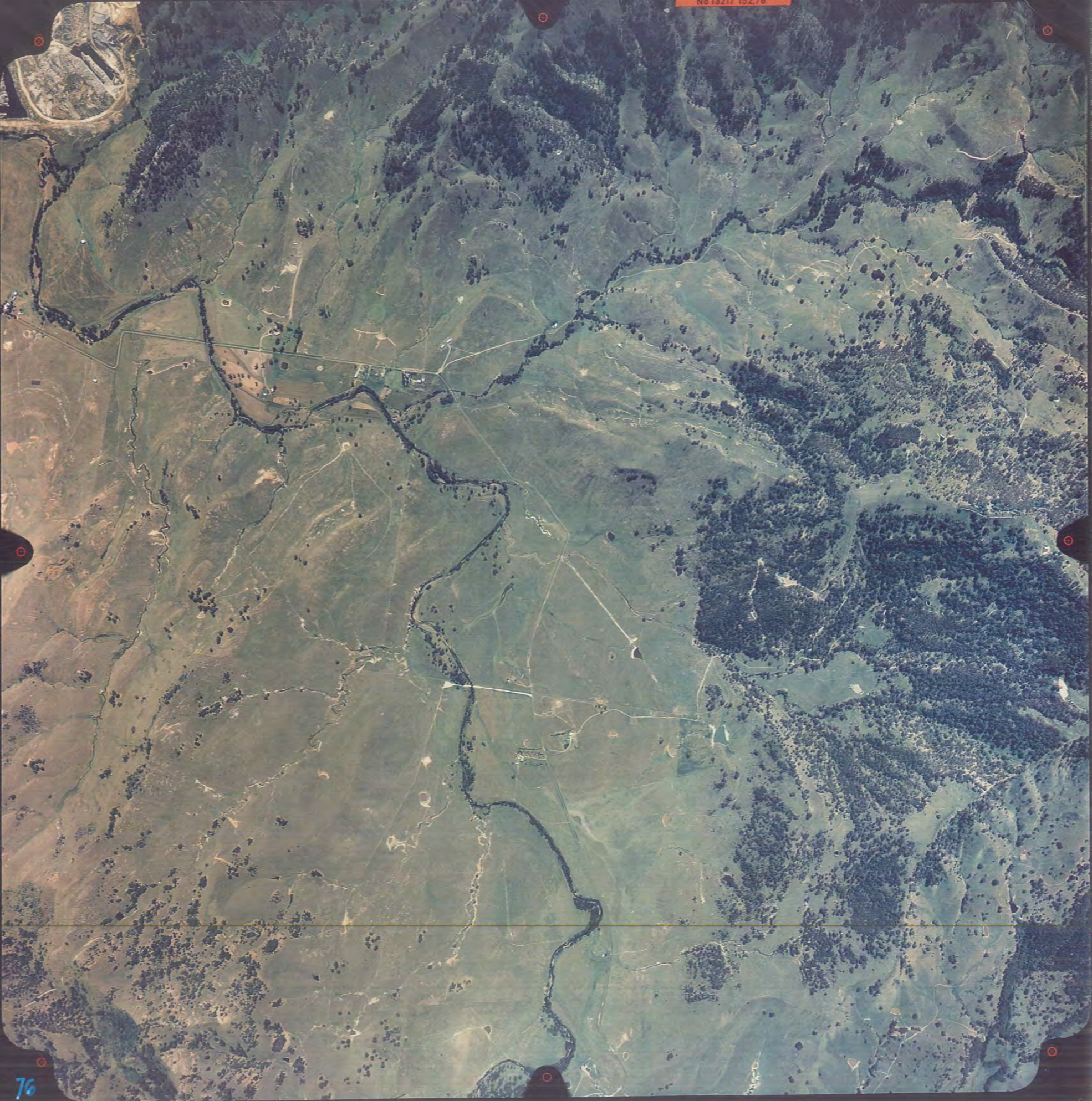


COPYRIGHT
NSW GOVT

WILD 15/4UA8-5
No 13217 152.76

0076

154470 154470 PHOTO SCALE F 1105800 27-11-93 4115 M ASL MUSWELLBROOK RUN 9



76

MUSWELLBROOK
1:25000 Approx Scale
NSW4170 (Colour)

RUN 9
27-11-93
52-76

4115 M ASL
152.76mm



COPYRIGHT
NSW GOVT

ERM has over 100 offices
across the following
countries worldwide

Australia	Netherlands
Argentina	Peru
Belgium	Poland
Brazil	Portugal
China	Puerto Rico
France	Singapore
Germany	Spain
Hong Kong	Sri Lanka
Hungary	Sweden
India	Taiwan
Indonesia	Thailand
Ireland	UK
Italy	USA
Japan	Venezuela
Korea	Vietnam
Malaysia	
Mexico	

Environmental Resources Management

Building C, 33 Saunders Street
Pyrmont NSW 2009
Locked Bag 24,
Broadway NSW 2007

T: 61 2 8584 8888
F: 61 2 8584 8800
www.erm.com

