

# AT A GLANCE

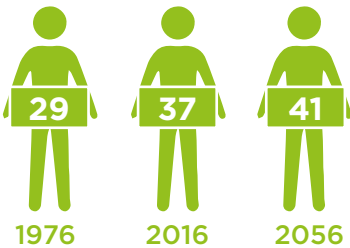
## PROJECTED NSW POPULATION IN 2056



# 11.2m

nearly 50% more than the 7.6m today

## NSW AGEING POPULATION



MEDIAN AGE

## LIFE EXPECTANCY



M 80.8 F 85.0  
CURRENT

M 88.6 F 91.4  
2056

## SIZE OF ECONOMY IN 2056

# \$1.3 trillion

(in 2014 dollars)

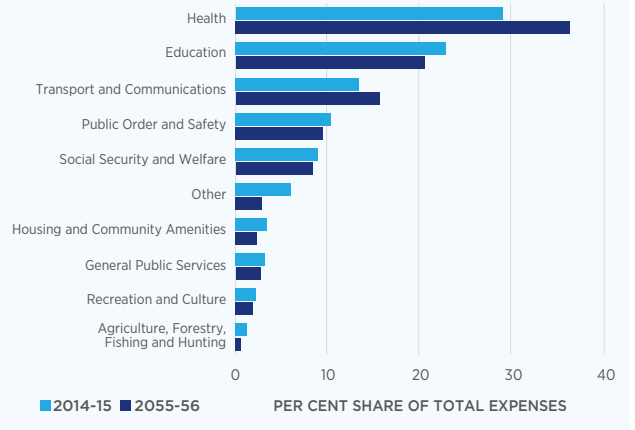
The first state to have a trillion dollar economy

## GROSS CAPITAL EXPENDITURE IN 2056

# \$49.2b

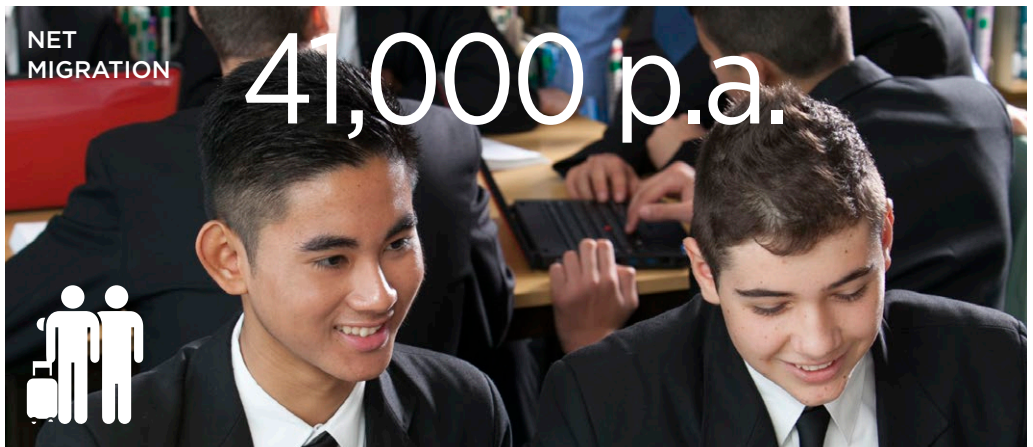
growing at 4.1% p.a.

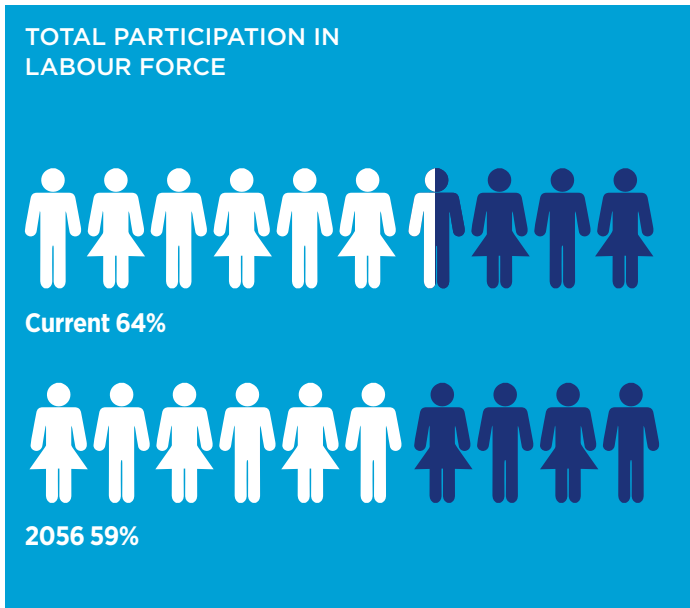
## HEALTH - THE LARGEST SHARE OF EXPENSES IN 2056



## NET MIGRATION

# 41,000 p.a.





**AGE 65+ PARTICIPATION IN THE LABOUR FORCE**



By 2056 over 18% of people aged over 65 still in the workforce



**REAL INCOME PER CAPITA**





More efficient service and infrastructure delivery and more employment opportunities for regional New South Wales